



[Go to Product page](#)

Datasheet for ABIN3186566

anti-PRPF18 antibody (Internal Region)

2 Images

Overview

Quantity:	100 µL
Target:	PRPF18
Binding Specificity:	Internal Region
Reactivity:	Human, Mouse, Rat
Host:	Rabbit
Clonality:	Polyclonal
Conjugate:	This PRPF18 antibody is un-conjugated
Application:	Western Blotting (WB), ELISA

Product Details

Immunogen:	Synthesized peptide derived from the Internal region of human PRPF18.
Isotype:	IgG
Specificity:	PRPF18 Polyclonal Antibody detects endogenous levels of PRPF18 protein.
Characteristics:	Rabbit Polyclonal to PRPF18.
Purification:	The antibody was affinity-purified from rabbit antiserum by affinity-chromatography using epitope-specific immunogen.

Target Details

Target:	PRPF18
Alternative Name:	PRPF18 (PRPF18 Products)

Target Details

Molecular Weight:	40 kDa
Gene ID:	8559
UniProt:	Q99633

Application Details

Application Notes:	WB 1:500-1:2000, ELISA 1:5000,
Restrictions:	For Research Use only

Handling

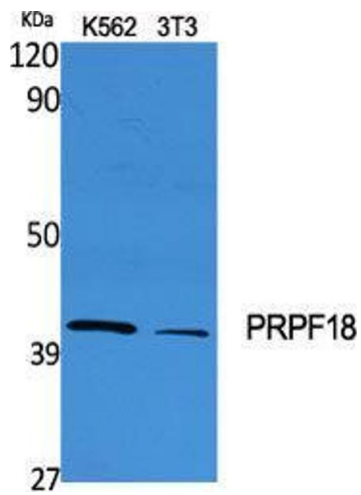
Format:	Liquid
Concentration:	1 mg/mL
Buffer:	Liquid in PBS containing 50 % glycerol, 0.5 % BSA and 0.02 % sodium azide.
Preservative:	Sodium azide
Precaution of Use:	This product contains Sodium azide: a POISONOUS AND HAZARDOUS SUBSTANCE which should be handled by trained staff only.
Handling Advice:	Avoid repeated freeze/thaw cycles.
Storage:	-20 °C
Storage Comment:	Store at -20°C.

Images



Western Blotting

Image 1.



Western Blotting

Image 2. Western Blot (WB) analysis of specific cells using PRPF18 Polyclonal Antibody.