



[Go to Product page](#)

Datasheet for ABIN3186600  
**anti-PTX3 antibody (N-Term)**

1 Image

Overview

Quantity:	100 µL
Target:	PTX3
Binding Specificity:	N-Term
Reactivity:	Human, Mouse
Host:	Rabbit
Clonality:	Polyclonal
Conjugate:	This PTX3 antibody is un-conjugated
Application:	Western Blotting (WB), ELISA, Immunohistochemistry (IHC), Immunofluorescence (IF)

Product Details

Immunogen:	Synthesized peptide derived from the N-terminal region of human Ptx3.
Isotype:	IgG
Specificity:	Ptx3 Polyclonal Antibody detects endogenous levels of Ptx3 protein.
Characteristics:	Rabbit Polyclonal to Ptx3.
Purification:	The antibody was affinity-purified from rabbit antiserum by affinity-chromatography using epitope-specific immunogen.

Target Details

Target:	PTX3
Alternative Name:	Ptx3 ( <a href="#">PTX3 Products</a> )

## Target Details

Molecular Weight: 40 kDa

Gene ID: 5806

UniProt: [P26022](#)

## Application Details

Application Notes: WB 1:500-1:2000, IHC 1:100-1:300, IF 1:200-1:1000, ELISA 1:10000,

Restrictions: For Research Use only

## Handling

Format: Liquid

Concentration: 1 mg/mL

Buffer: Liquid in PBS containing 50 % glycerol, 0.5 % BSA and 0.02 % sodium azide.

Preservative: Sodium azide

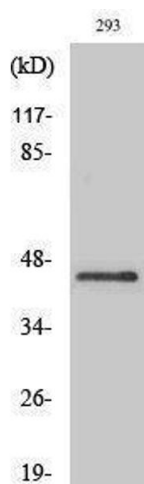
Precaution of Use: This product contains Sodium azide: a POISONOUS AND HAZARDOUS SUBSTANCE which should be handled by trained staff only.

Handling Advice: Avoid repeated freeze/thaw cycles.

Storage: -20 °C

Storage Comment: Store at -20°C.

## Images



### Western Blotting

Image 1.