



[Go to Product page](#)

Datasheet for ABIN3186757

## anti-RHOBTB3 antibody (Internal Region)

### 2 Images

#### Overview

Quantity:	100 µL
Target:	RHOBTB3
Binding Specificity:	Internal Region
Reactivity:	Human, Mouse
Host:	Rabbit
Clonality:	Polyclonal
Conjugate:	This RHOBTB3 antibody is un-conjugated
Application:	ELISA, Western Blotting (WB), Immunohistochemistry (IHC), Immunocytochemistry (ICC)

#### Product Details

Immunogen:	Synthesized peptide derived from the Internal region of human RHOBTB3.
Isotype:	IgG
Specificity:	RHOBTB3 Polyclonal Antibody detects endogenous levels of RHOBTB3 protein.
Characteristics:	Rabbit Polyclonal to RHOBTB3.
Purification:	The antibody was affinity-purified from rabbit antiserum by affinity-chromatography using epitope-specific immunogen.

#### Target Details

Target:	RHOBTB3
Alternative Name:	RHOBTB3 ( <a href="#">RHOBTB3 Products</a> )

## Target Details

Molecular Weight:	70 kDa
Gene ID:	22836
UniProt:	<a href="#">O94955</a>

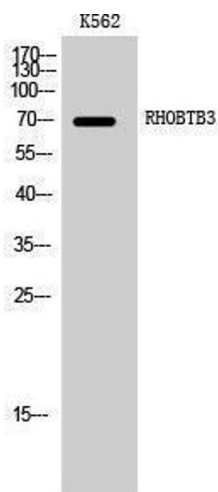
## Application Details

Application Notes:	WB 1:500-1:2000, IHC 1:100-1:300, ICC 1:200-1:1000, ELISA 1:40000,
Restrictions:	For Research Use only

## Handling

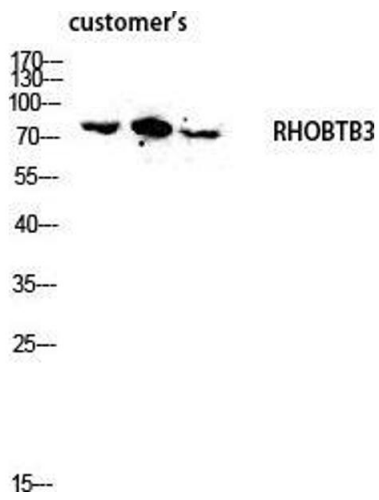
Format:	Liquid
Concentration:	1 mg/mL
Buffer:	Liquid in PBS containing 50 % glycerol, 0.5 % BSA and 0.02 % sodium azide.
Preservative:	Sodium azide
Precaution of Use:	This product contains Sodium azide: a POISONOUS AND HAZARDOUS SUBSTANCE which should be handled by trained staff only.
Handling Advice:	Avoid repeated freeze/thaw cycles.
Storage:	-20 °C
Storage Comment:	Store at -20°C.

## Images



### Western Blotting

Image 1.



### Western Blotting

**Image 2.** Western Blot (WB) analysis of lysis using RHOBTB3 antibody.