



[Go to Product page](#)

Datasheet for ABIN3186858

anti-Retinoid X Receptor gamma antibody (Internal Region)

2 Images

Overview

Quantity:	100 µL
Target:	Retinoid X Receptor gamma (RXRG)
Binding Specificity:	Internal Region
Reactivity:	Human, Mouse
Host:	Rabbit
Clonality:	Polyclonal
Conjugate:	This Retinoid X Receptor gamma antibody is un-conjugated
Application:	Western Blotting (WB), ELISA, Immunohistochemistry (IHC), Immunofluorescence (IF)

Product Details

Immunogen:	Synthesized peptide derived from the Internal region of human RXRgamma.
Isotype:	IgG
Specificity:	RXRγ Polyclonal Antibody detects endogenous levels of RXRγ protein.
Characteristics:	Rabbit Polyclonal to RXRγ.
Purification:	The antibody was affinity-purified from rabbit antiserum by affinity-chromatography using epitope-specific immunogen.

Target Details

Target:	Retinoid X Receptor gamma (RXRG)
Alternative Name:	RXRgamma (RXRG Products)

Target Details

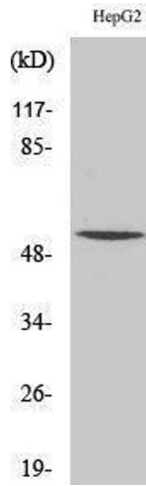
Molecular Weight:	50 kDa
Gene ID:	6258
UniProt:	P48443
Pathways:	Nuclear Receptor Transcription Pathway , Retinoic Acid Receptor Signaling Pathway , Steroid Hormone Mediated Signaling Pathway

Application Details

Application Notes:	WB 1:500-1:2000, IHC 1:100-1:300, IF 1:200-1:1000, ELISA 1:10000,
Restrictions:	For Research Use only

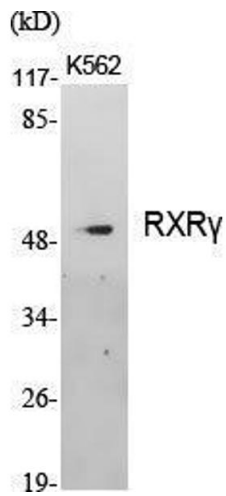
Handling

Format:	Liquid
Concentration:	1 mg/mL
Buffer:	Liquid in PBS containing 50 % glycerol, 0.5 % BSA and 0.02 % sodium azide.
Preservative:	Sodium azide
Precaution of Use:	This product contains Sodium azide: a POISONOUS AND HAZARDOUS SUBSTANCE which should be handled by trained staff only.
Handling Advice:	Avoid repeated freeze/thaw cycles.
Storage:	-20 °C
Storage Comment:	Store at -20°C.



Western Blotting

Image 1.



Western Blotting

Image 2. Western Blot (WB) analysis of specific cells using RXR γ Polyclonal Antibody.