



[Go to Product page](#)

Datasheet for ABIN3186899

anti-SENP2 antibody (C-Term)

1 Image

Overview

Quantity:	100 µL
Target:	SENP2
Binding Specificity:	C-Term
Reactivity:	Human, Mouse, Rat
Host:	Rabbit
Clonality:	Polyclonal
Conjugate:	This SENP2 antibody is un-conjugated
Application:	Western Blotting (WB), Immunohistochemistry (IHC), ELISA

Product Details

Immunogen:	Synthesized peptide derived from the C-terminal region of human SENP2.
Isotype:	IgG
Specificity:	SENP2 Polyclonal Antibody detects endogenous levels of SENP2 protein.
Characteristics:	Rabbit Polyclonal to SENP2.
Purification:	The antibody was affinity-purified from rabbit antiserum by affinity-chromatography using epitope-specific immunogen.

Target Details

Target:	SENP2
Alternative Name:	SENP2 (SENP2 Products)

Target Details

Molecular Weight:	68 kDa
Gene ID:	59343
UniProt:	Q9HC62
Pathways:	Chromatin Binding

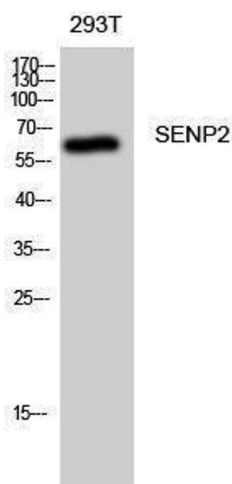
Application Details

Application Notes:	WB 1:500-1:2000, IHC 1:100-1:300, ELISA 1:20000,
Restrictions:	For Research Use only

Handling

Format:	Liquid
Concentration:	1 mg/mL
Buffer:	Liquid in PBS containing 50 % glycerol, 0.5 % BSA and 0.02 % sodium azide.
Preservative:	Sodium azide
Precaution of Use:	This product contains Sodium azide: a POISONOUS AND HAZARDOUS SUBSTANCE which should be handled by trained staff only.
Handling Advice:	Avoid repeated freeze/thaw cycles.
Storage:	-20 °C
Storage Comment:	Store at -20°C.

Images



Western Blotting

Image 1.