

Datasheet for ABIN3186914

## anti-ATP2A1/SERCA1 antibody (Internal Region)



[Go to Product page](#)

### 1 Image

#### Overview

|                      |  |
|----------------------|--|
| Quantity:            | 100 µL   |
| Target:              | ATP2A1/SERCA1 (ATP2A1)                                   |
| Binding Specificity: | Internal Region  |
| Reactivity:          | Human, Rat, Mouse  |
| Host:                | Rabbit   |
| Clonality:           | Polyclonal   |
| Conjugate:           | This ATP2A1/SERCA1 antibody is un-conjugated             |
| Application:         | Western Blotting (WB), ELISA, Immunohistochemistry (IHC) |

#### Product Details

|                  |   |
|------------------|---|
| Immunogen:       | Synthesized peptide derived from the Internal region of human SERCA1.   |
| Isotype:         | IgG   |
| Specificity:     | SERCA1 Polyclonal Antibody detects endogenous levels of SERCA1 protein.   |
| Characteristics: | Rabbit Polyclonal to SERCA1.  |
| Purification:    | The antibody was affinity-purified from rabbit antiserum by affinity-chromatography using epitope-specific immunogen. |

#### Target Details

|                   |  |
|-------------------|--|
| Target:           | ATP2A1/SERCA1 (ATP2A1)                     |
| Alternative Name: | SERCA1 ( <a href="#">ATP2A1 Products</a> ) |

## Target Details

|                   |   |
|-------------------|---|
| Molecular Weight: | 100 kDa   |
| Gene ID:          | 487   |
| UniProt:          | <a href="#">O14983</a>                              |
| Pathways:         | <a href="#">Ribonucleoside Biosynthetic Process</a> |

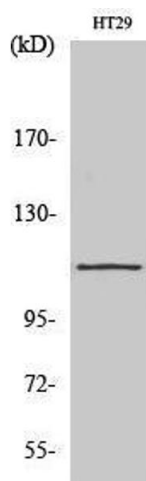
## Application Details

|                    |  |
|--------------------|--|
| Application Notes: | WB 1:500-1:2000, IHC 1:100-1:300, ELISA 1:10000, |
| Restrictions:      | For Research Use only                            |

## Handling

|                    |  |
|--------------------|--|
| Format:            | Liquid   |
| Concentration:     | 1 mg/mL  |
| Buffer:            | Liquid in PBS containing 50 % glycerol, 0.5 % BSA and 0.02 % sodium azide.   |
| Preservative:      | Sodium azide   |
| Precaution of Use: | This product contains Sodium azide: a POISONOUS AND HAZARDOUS SUBSTANCE which should be handled by trained staff only. |
| Handling Advice:   | Avoid repeated freeze/thaw cycles.   |
| Storage:           | -20 °C   |
| Storage Comment:   | Store at -20°C.  |

## Images



### Western Blotting

Image 1.