

Datasheet for ABIN3186947
anti-SHC1 antibody (Tyr1092)



[Go to Product page](#)

1 Image

Overview

Quantity:	100 µL
Target:	SHC1
Binding Specificity:	Tyr1092
Reactivity:	Human, Mouse, Rat
Host:	Rabbit
Clonality:	Polyclonal
Conjugate:	This SHC1 antibody is un-conjugated
Application:	Western Blotting (WB), Immunohistochemistry (IHC), ELISA

Product Details

Immunogen:	Synthesized peptide derived from human Shc around the non-phosphorylation site of Y427.
Isotype:	IgG
Specificity:	Shc Polyclonal Antibody detects endogenous levels of Shc protein.
Characteristics:	Rabbit Polyclonal to Shc.
Purification:	The antibody was affinity-purified from rabbit antiserum by affinity-chromatography using epitope-specific immunogen.

Target Details

Target:	SHC1
Alternative Name:	Shc (SHC1 Products)

Target Details

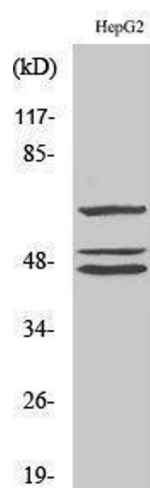
Molecular Weight:	170 kDa
Gene ID:	6464
UniProt:	P29353
Pathways:	RTK Signaling , TCR Signaling , Fc-epsilon Receptor Signaling Pathway , EGFR Signaling Pathway , Neurotrophin Signaling Pathway , ER-Nucleus Signaling , Signaling Events mediated by VEGFR1 and VEGFR2

Application Details

Application Notes:	WB 1:500-1:2000, IHC 1:100-1:300, ELISA 1:20000,
Restrictions:	For Research Use only

Handling

Format:	Liquid
Concentration:	1 mg/mL
Buffer:	Liquid in PBS containing 50 % glycerol, 0.5 % BSA and 0.02 % sodium azide.
Preservative:	Sodium azide
Precaution of Use:	This product contains Sodium azide: a POISONOUS AND HAZARDOUS SUBSTANCE which should be handled by trained staff only.
Handling Advice:	Avoid repeated freeze/thaw cycles.
Storage:	-20 °C
Storage Comment:	Store at -20°C.



Western Blotting

Image 1.