



[Go to Product page](#)

Datasheet for ABIN3186956

anti-SIAH1/2 antibody (Internal Region)

2 Images

Overview

Quantity:	100 µL
Target:	SIAH1/2
Binding Specificity:	Internal Region
Reactivity:	Human, Mouse, Rat
Host:	Rabbit
Clonality:	Polyclonal
Conjugate:	This SIAH1/2 antibody is un-conjugated
Application:	Western Blotting (WB), Immunohistochemistry (IHC), Immunofluorescence (IF), ELISA

Product Details

Immunogen:	Synthesized peptide derived from the Internal region of human Siah-1/2.
Isotype:	IgG
Specificity:	Siah-1/2 Polyclonal Antibody detects endogenous levels of Siah-1/2 protein.
Characteristics:	Rabbit Polyclonal to Siah-1/2.
Purification:	The antibody was affinity-purified from rabbit antiserum by affinity-chromatography using epitope-specific immunogen.

Target Details

Target:	SIAH1/2
Alternative Name:	Siah-1/2 (SIAH1/2 Products)

Target Details

Molecular Weight:	34 kDa
Gene ID:	6477, 6478
UniProt:	Q8IUQ4 , O43255

Application Details

Application Notes:	WB 1:500-1:2000, IHC 1:100-1:300, IF 1:200-1:1000, ELISA 1:10000,
Restrictions:	For Research Use only

Handling

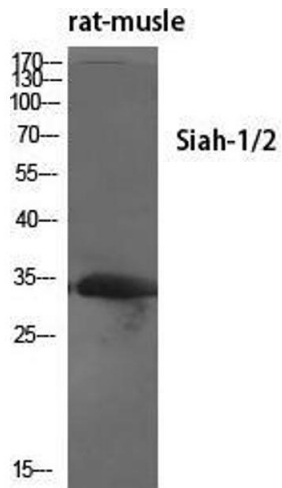
Format:	Liquid
Concentration:	1 mg/mL
Buffer:	Liquid in PBS containing 50 % glycerol, 0.5 % BSA and 0.02 % sodium azide.
Preservative:	Sodium azide
Precaution of Use:	This product contains Sodium azide: a POISONOUS AND HAZARDOUS SUBSTANCE which should be handled by trained staff only.
Handling Advice:	Avoid repeated freeze/thaw cycles.
Storage:	-20 °C
Storage Comment:	Store at -20°C.

Images



Western Blotting

Image 1.



Western Blotting

Image 2. Western Blot (WB) analysis of specific cells using Siah-1/2 Polyclonal Antibody.