

Datasheet for ABIN3187041

anti-Splicing Factor 1 antibody (Tyr352)[Go to Product page](#)**1** Image

Overview

Quantity:	100 µL
Target:	Splicing Factor 1 (SF1)
Binding Specificity:	Tyr352
Reactivity:	Human, Mouse
Host:	Rabbit
Clonality:	Polyclonal
Conjugate:	This Splicing Factor 1 antibody is un-conjugated
Application:	Western Blotting (WB), ELISA, Immunohistochemistry (IHC), Immunofluorescence (IF)

Product Details

Immunogen:	Synthesized peptide derived from human Splicing factor 1 around the non-phosphorylation site of S82.
Isotype:	IgG
Specificity:	Splicing factor 1 Polyclonal Antibody detects endogenous levels of Splicing factor 1 protein.
Characteristics:	Rabbit Polyclonal to Splicing factor 1.
Purification:	The antibody was affinity-purified from rabbit antiserum by affinity-chromatography using epitope-specific immunogen.

Target Details

Target:	Splicing Factor 1 (SF1)
---------	-------------------------

Target Details

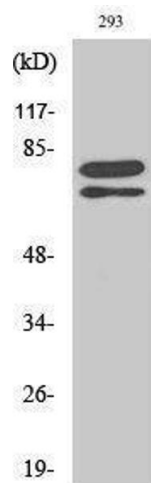
Alternative Name:	Splicing Factor 1 (SF1 Products)
Molecular Weight:	72 kDa
Gene ID:	7536
UniProt:	Q15637
Pathways:	Nuclear Receptor Transcription Pathway , Steroid Hormone Mediated Signaling Pathway , Ribonucleoprotein Complex Subunit Organization , Maintenance of Protein Location

Application Details

Application Notes:	WB 1:500-1:2000, IHC 1:100-1:300, IF 1:200-1:1000, ELISA 1:20000,
Restrictions:	For Research Use only

Handling

Format:	Liquid
Concentration:	1 mg/mL
Buffer:	Liquid in PBS containing 50 % glycerol, 0.5 % BSA and 0.02 % sodium azide.
Preservative:	Sodium azide
Precaution of Use:	This product contains Sodium azide: a POISONOUS AND HAZARDOUS SUBSTANCE which should be handled by trained staff only.
Handling Advice:	Avoid repeated freeze/thaw cycles.
Storage:	-20 °C
Storage Comment:	Store at -20°C.



Western Blotting

Image 1.