



[Go to Product page](#)

Datasheet for ABIN3187123

anti-Synaptotagmin antibody (Ser1148)

1 Image

Overview

Quantity:	100 µL
Target:	Synaptotagmin (SYT)
Binding Specificity:	Ser1148
Reactivity:	Rat, Mouse, Human
Host:	Rabbit
Clonality:	Polyclonal
Conjugate:	This Synaptotagmin antibody is un-conjugated
Application:	Western Blotting (WB), Immunohistochemistry (IHC), ELISA

Product Details

Immunogen:	Synthesized peptide derived from human Synaptotagmin 1/2 around the non-phosphorylation site of T202/199.
Isotype:	IgG
Specificity:	Synaptotagmin Polyclonal Antibody detects endogenous levels of Synaptotagmin protein.
Characteristics:	Rabbit Polyclonal to Synaptotagmin.
Purification:	The antibody was affinity-purified from rabbit antiserum by affinity-chromatography using epitope-specific immunogen.

Target Details

Target:	Synaptotagmin (SYT)
---------	---------------------

Target Details

Alternative Name: Synaptotagmin ([SYT Products](#))

Molecular Weight: 175 kDa

Gene ID: 6857, 127833

UniProt: [P21579](#), [Q8N9I0](#)

Application Details

Application Notes: WB 1:500-1:2000, IHC 1:100-1:300, ELISA 1:5000,

Restrictions: For Research Use only

Handling

Format: Liquid

Concentration: 1 mg/mL

Buffer: Liquid in PBS containing 50 % glycerol, 0.5 % BSA and 0.02 % sodium azide.

Preservative: Sodium azide

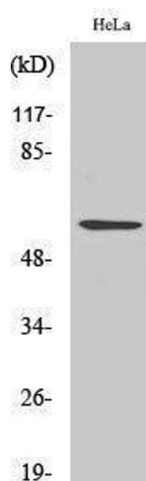
Precaution of Use: This product contains Sodium azide: a POISONOUS AND HAZARDOUS SUBSTANCE which should be handled by trained staff only.

Handling Advice: Avoid repeated freeze/thaw cycles.

Storage: -20 °C

Storage Comment: Store at -20°C.

Images



Western Blotting

Image 1.