



[Go to Product page](#)

Datasheet for ABIN3187203
anti-TCF7 antibody (N-Term)

1 Image

Overview

Quantity:	100 µL
Target:	TCF7
Binding Specificity:	N-Term
Reactivity:	Human, Mouse
Host:	Rabbit
Clonality:	Polyclonal
Application:	Western Blotting (WB), ELISA, Immunohistochemistry (IHC)

Product Details

Immunogen:	Synthesized peptide derived from the N-terminal region of human TCF-1.
Isotype:	IgG
Specificity:	TCF-1 Polyclonal Antibody detects endogenous levels of TCF-1 protein.
Characteristics:	Rabbit Polyclonal to TCF-1.
Purification:	The antibody was affinity-purified from rabbit antiserum by affinity-chromatography using epitope-specific immunogen.

Target Details

Target:	TCF7
Alternative Name:	TCF-1 (TCF7 Products)
Molecular Weight:	42 kDa

Target Details

Gene ID:	6932
UniProt:	P36402
Pathways:	WNT Signaling

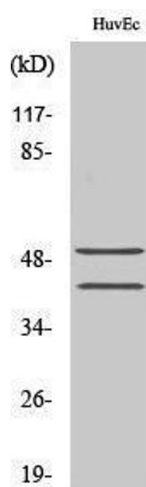
Application Details

Application Notes:	WB 1:500-1:2000, IHC 1:100-1:300, ELISA 1:10000,
Restrictions:	For Research Use only

Handling

Format:	Liquid
Concentration:	1 mg/mL
Buffer:	Liquid in PBS containing 50 % glycerol, 0.5 % BSA and 0.02 % sodium azide.
Preservative:	Sodium azide
Precaution of Use:	This product contains Sodium azide: a POISONOUS AND HAZARDOUS SUBSTANCE which should be handled by trained staff only.
Handling Advice:	Avoid repeated freeze/thaw cycles.
Storage:	-20 °C
Storage Comment:	Store at -20°C.

Validation report #103932 for Western Blotting (WB)



Western Blotting

Image 1.