

Datasheet for ABIN3187207  
**anti-TCFL5 antibody (C-Term)**[Go to Product page](#)

## 1 Image

## Overview

Quantity:	100 µL
Target:	TCFL5
Binding Specificity:	C-Term
Reactivity:	Human, Mouse
Host:	Rabbit
Clonality:	Polyclonal
Application:	Western Blotting (WB), ELISA, Immunohistochemistry (IHC)

## Product Details

Immunogen:	Synthesized peptide derived from the C-terminal region of human TCFL5.
Isotype:	IgG
Specificity:	TCFL5 Polyclonal Antibody detects endogenous levels of TCFL5 protein.
Characteristics:	Rabbit Polyclonal to TCFL5.
Purification:	The antibody was affinity-purified from rabbit antiserum by affinity-chromatography using epitope-specific immunogen.

## Target Details

Target:	TCFL5
Alternative Name:	TCFL5 ( <a href="#">TCFL5 Products</a> )
Molecular Weight:	48 kDa

### Target Details

Gene ID:	10732
UniProt:	<a href="#">Q9UL49</a>

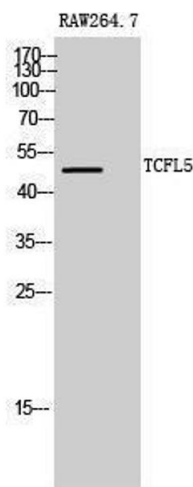
### Application Details

Application Notes:	WB 1:500-1:2000, IHC 1:100-1:300, ELISA 1:20000,
Restrictions:	For Research Use only

### Handling

Format:	Liquid
Concentration:	1 mg/mL
Buffer:	Liquid in PBS containing 50 % glycerol, 0.5 % BSA and 0.02 % sodium azide.
Preservative:	Sodium azide
Precaution of Use:	This product contains Sodium azide: a POISONOUS AND HAZARDOUS SUBSTANCE which should be handled by trained staff only.
Handling Advice:	Avoid repeated freeze/thaw cycles.
Storage:	-20 °C
Storage Comment:	Store at -20°C.

### Validation report #103932 for Western Blotting (WB)



**Western Blotting**

**Image 1.**