



[Go to Product page](#)

Datasheet for ABIN3187250
anti-TGFB2 antibody (C-Term)

1 Image

Overview

Quantity:	100 µL
Target:	TGFB2
Binding Specificity:	C-Term
Reactivity:	Human, Mouse, Rat
Host:	Rabbit
Clonality:	Polyclonal
Application:	Western Blotting (WB), ELISA, Immunohistochemistry (IHC)

Product Details

Immunogen:	Synthesized peptide derived from the C-terminal region of human TGFbeta2.
Isotype:	IgG
Specificity:	TGFβ2 Polyclonal Antibody detects endogenous levels of TGFβ2 protein.
Characteristics:	Rabbit Polyclonal to TGFβ2.
Purification:	The antibody was affinity-purified from rabbit antiserum by affinity-chromatography using epitope-specific immunogen.

Target Details

Target:	TGFB2
Alternative Name:	TGFbeta2 (TGFB2 Products)
Molecular Weight:	47.748 kDa

Target Details

Gene ID: 7042

UniProt: [P61812](#)

Pathways: [Cell-Cell Junction Organization](#), [Production of Molecular Mediator of Immune Response](#), [Protein targeting to Nucleus](#)

Application Details

Application Notes: WB 1:500-1:2000, IHC 1:100-1:300, ELISA 1:20000,

Restrictions: For Research Use only

Handling

Format: Liquid

Concentration: 1 mg/mL

Buffer: Liquid in PBS containing 50 % glycerol, 0.5 % BSA and 0.02 % sodium azide.

Preservative: Sodium azide

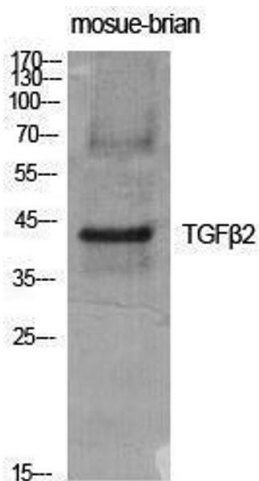
Precaution of Use: This product contains Sodium azide: a POISONOUS AND HAZARDOUS SUBSTANCE which should be handled by trained staff only.

Handling Advice: Avoid repeated freeze/thaw cycles.

Storage: -20 °C

Storage Comment: Store at -20°C.

Images



Western Blotting

Image 1.