



[Go to Product page](#)

Datasheet for ABIN3187327

## anti-MED1 antibody (Internal Region)

### 1 Image

#### Overview

Quantity:	100 µL
Target:	MED1
Binding Specificity:	Internal Region
Reactivity:	Human, Mouse
Host:	Rabbit
Clonality:	Polyclonal
Conjugate:	This MED1 antibody is un-conjugated
Application:	Western Blotting (WB), ELISA, Immunohistochemistry (IHC)

#### Product Details

Immunogen:	Synthesized peptide derived from the Internal region of human TRAP220.
Isotype:	IgG
Specificity:	TRAP220 Polyclonal Antibody detects endogenous levels of TRAP220 protein.
Characteristics:	Rabbit Polyclonal to TRAP220.
Purification:	The antibody was affinity-purified from rabbit antiserum by affinity-chromatography using epitope-specific immunogen.

#### Target Details

Target:	MED1
Alternative Name:	TRAP220 ( <a href="#">MED1 Products</a> )

## Target Details

---

Molecular Weight:	170 kDa
Gene ID:	5469
UniProt:	<a href="#">Q15648</a>
Pathways:	<a href="#">Nuclear Receptor Transcription Pathway</a> , <a href="#">Intracellular Steroid Hormone Receptor Signaling Pathway</a> , <a href="#">Regulation of Intracellular Steroid Hormone Receptor Signaling</a> , <a href="#">Nuclear Hormone Receptor Binding</a> , <a href="#">Chromatin Binding</a> , <a href="#">Regulation of Lipid Metabolism by PPARalpha</a>

## Application Details

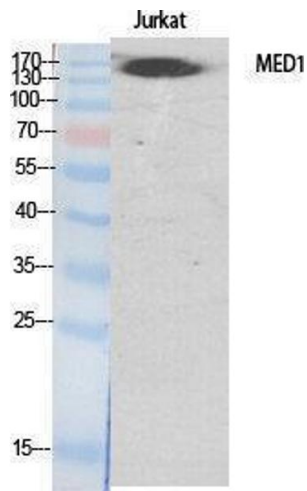
---

Application Notes:	WB 1:500-1:2000, IHC 1:100-1:300, ELISA 1:10000,
Restrictions:	For Research Use only

## Handling

---

Format:	Liquid
Concentration:	1 mg/mL
Buffer:	Liquid in PBS containing 50 % glycerol, 0.5 % BSA and 0.02 % sodium azide.
Preservative:	Sodium azide
Precaution of Use:	This product contains Sodium azide: a POISONOUS AND HAZARDOUS SUBSTANCE which should be handled by trained staff only.
Handling Advice:	Avoid repeated freeze/thaw cycles.
Storage:	-20 °C
Storage Comment:	Store at -20°C.



### Western Blotting

Image 1.