



[Go to Product page](#)

Datasheet for ABIN3187328
anti-MED1 antibody (Thr2647)

1 Image

Overview

Quantity:	100 µL
Target:	MED1
Binding Specificity:	Thr2647
Reactivity:	Human, Mouse
Host:	Rabbit
Clonality:	Polyclonal
Conjugate:	This MED1 antibody is un-conjugated
Application:	Western Blotting (WB), ELISA, Immunofluorescence (IF)

Product Details

Immunogen:	Synthesized peptide derived from human TRAP220 around the non-phosphorylation site of T1457.
Isotype:	IgG
Specificity:	TRAP220 Polyclonal Antibody detects endogenous levels of TRAP220 protein.
Characteristics:	Rabbit Polyclonal to TRAP220.
Purification:	The antibody was affinity-purified from rabbit antiserum by affinity-chromatography using epitope-specific immunogen.

Target Details

Target:	MED1
---------	------

Target Details

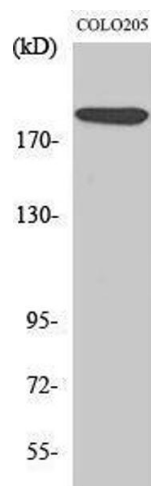
Alternative Name:	TRAP220 (MED1 Products)
Molecular Weight:	450 kDa
Gene ID:	5469
UniProt:	Q15648
Pathways:	Nuclear Receptor Transcription Pathway , Intracellular Steroid Hormone Receptor Signaling Pathway , Regulation of Intracellular Steroid Hormone Receptor Signaling , Nuclear Hormone Receptor Binding , Chromatin Binding , Regulation of Lipid Metabolism by PPARalpha

Application Details

Application Notes:	WB 1:500-1:2000, IF 1:200-1:1000, ELISA 1:10000,
Restrictions:	For Research Use only

Handling

Format:	Liquid
Concentration:	1 mg/mL
Buffer:	Liquid in PBS containing 50 % glycerol, 0.5 % BSA and 0.02 % sodium azide.
Preservative:	Sodium azide
Precaution of Use:	This product contains Sodium azide: a POISONOUS AND HAZARDOUS SUBSTANCE which should be handled by trained staff only.
Handling Advice:	Avoid repeated freeze/thaw cycles.
Storage:	-20 °C
Storage Comment:	Store at -20°C.



Western Blotting

Image 1.