



Datasheet for ABIN3187345
anti-TRKB antibody (Thr184)



[Go to Product page](#)

2 Images

Overview

| | |
|----------------------|--|
| Quantity: | 100 µL |
| Target: | TRKB (NTRK2) |
| Binding Specificity: | Thr184 |
| Reactivity: | Human, Rat, Mouse |
| Host: | Rabbit |
| Clonality: | Polyclonal |
| Conjugate: | This TRKB antibody is un-conjugated |
| Application: | Western Blotting (WB), Immunohistochemistry (IHC), ELISA |

Product Details

| | |
|------------------|---|
| Immunogen: | Synthesized peptide derived from human Trk B around the non-phosphorylation site of Y706. |
| Isotype: | IgG |
| Specificity: | Trk B Polyclonal Antibody detects endogenous levels of Trk B protein. |
| Characteristics: | Rabbit Polyclonal to Trk B. |
| Purification: | The antibody was affinity-purified from rabbit antiserum by affinity-chromatography using epitope-specific immunogen. |

Target Details

| | |
|-------------------|--|
| Target: | TRKB (NTRK2) |
| Alternative Name: | Trk B (NTRK2 Products) |

Target Details

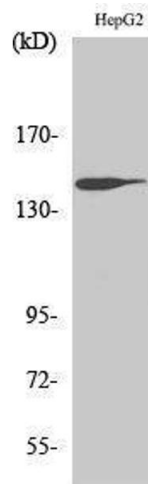
| | |
|-------------------|---|
| Molecular Weight: | 67 kDa |
| Gene ID: | 4915 |
| UniProt: | Q16620 |
| Pathways: | RTK Signaling , Neurotrophin Signaling Pathway , cAMP Metabolic Process , Skeletal Muscle Fiber Development , Feeding Behaviour , Dicarboxylic Acid Transport |

Application Details

| | |
|--------------------|--|
| Application Notes: | WB 1:500-1:2000, IHC 1:100-1:300, ELISA 1:20000, |
| Restrictions: | For Research Use only |

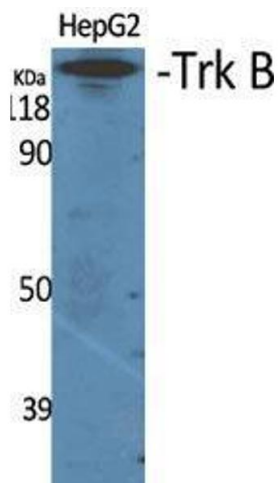
Handling

| | |
|--------------------|--|
| Format: | Liquid |
| Concentration: | 1 mg/mL |
| Buffer: | Liquid in PBS containing 50 % glycerol, 0.5 % BSA and 0.02 % sodium azide. |
| Preservative: | Sodium azide |
| Precaution of Use: | This product contains Sodium azide: a POISONOUS AND HAZARDOUS SUBSTANCE which should be handled by trained staff only. |
| Handling Advice: | Avoid repeated freeze/thaw cycles. |
| Storage: | -20 °C |
| Storage Comment: | Store at -20°C. |



Western Blotting

Image 1.



Western Blotting

Image 2. Western Blot (WB) analysis of specific cells using Trk B Polyclonal Antibody.