



[Go to Product page](#)

Datasheet for ABIN3187364  
**anti-CADM1 antibody (C-Term)**

3 Images

Overview

Quantity:	100 µL
Target:	CADM1
Binding Specificity:	C-Term
Reactivity:	Human, Mouse
Host:	Rabbit
Clonality:	Polyclonal
Conjugate:	This CADM1 antibody is un-conjugated
Application:	Western Blotting (WB), ELISA, Immunofluorescence (IF)

Product Details

Immunogen:	Synthesized peptide derived from the C-terminal region of human TSLC1.
Isotype:	IgG
Specificity:	TSLC1 Polyclonal Antibody detects endogenous levels of TSLC1 protein.
Characteristics:	Rabbit Polyclonal to TSLC1.
Purification:	The antibody was affinity-purified from rabbit antiserum by affinity-chromatography using epitope-specific immunogen.

Target Details

Target:	CADM1
Alternative Name:	TSLC1 ( <a href="#">CADM1 Products</a> )

## Target Details

---

Molecular Weight:	49 kDa
Gene ID:	23705
UniProt:	<a href="#">Q9BY67</a>
Pathways:	<a href="#">Regulation of Leukocyte Mediated Immunity</a> , <a href="#">Positive Regulation of Immune Effector Process</a> , <a href="#">Cell-Cell Junction Organization</a> , <a href="#">Activated T Cell Proliferation</a>

## Application Details

---

Application Notes:	WB 1:500-1:2000, IF 1:200-1:1000, ELISA 1:20000,
Restrictions:	For Research Use only

## Handling

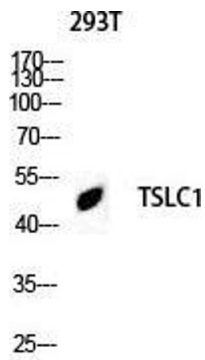
---

Format:	Liquid
Concentration:	1 mg/mL
Buffer:	Liquid in PBS containing 50 % glycerol, 0.5 % BSA and 0.02 % sodium azide.
Preservative:	Sodium azide
Precaution of Use:	This product contains Sodium azide: a POISONOUS AND HAZARDOUS SUBSTANCE which should be handled by trained staff only.
Handling Advice:	Avoid repeated freeze/thaw cycles.
Storage:	-20 °C
Storage Comment:	Store at -20°C.



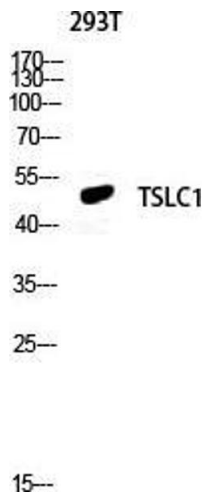
### Western Blotting

**Image 1.**



### Western Blotting

**Image 2.** Western Blot (WB) analysis of 293T lysis using TSLC1 antibody.



### Western Blotting

**Image 3.** Western Blot (WB) analysis of 293T lysis using TSLC1 antibody.