



[Go to Product page](#)

Datasheet for ABIN318744
anti-IL23A antibody (C-Term)

2 Images

Overview

Quantity:	0.1 mg
Target:	IL23A
Binding Specificity:	C-Term
Reactivity:	Human, Mouse
Host:	Rabbit
Clonality:	Polyclonal
Conjugate:	This IL23A antibody is un-conjugated
Application:	Western Blotting (WB), Immunofluorescence (IF), Immunohistochemistry (Frozen Sections) (IHC (fro))

Product Details

Immunogen:	A 14 amino acid peptide from near the carboxy-terminus of human IL-23
Isotype:	IgG
Specificity:	This antibody detects an epitope within the C-terminal (CT) domain of Human Interleukin-23 (IL-23).
Cross-Reactivity (Details):	Species reactivity (expected):Mouse. Species reactivity (tested):Human.
Purification:	Purified

Target Details

Target:	IL23A
---------	-------

Target Details

Alternative Name:	Interleukin-23 alpha / IL23A (IL23A Products)
Background:	IL23 is a 21kD heterodimeric cytokine structurally related to IL-12. IL-23 is composed of a p19 subunit encoded by the IL23A gene, and a p40 subunit of interleukin-12 (IL12B). IL-23 is expressed mainly by activated macrophages and dendritic cells, and plays an important role in bridging innate and adaptive responses. IL-23 activates a subset of T cells called Th17 cells, which are characterised by the production of interleukin-17. The IL-23/IL-17 pathway is essential for the induction and maintenance of brain and joint inflammatory autoimmune diseases, including Guillain Barre Syndrome, Multiple sclerosis and rheumatoid arthritis. Synonyms: IL-23 subunit alpha, IL-23p19, Interleukin-23 subunit p19, SGRF
Gene ID:	51561
NCBI Accession:	NP_057668
UniProt:	Q9NPF7
Pathways:	Regulation of Leukocyte Mediated Immunity , Positive Regulation of Immune Effector Process , Activated T Cell Proliferation

Application Details

Application Notes:	Immunohistochemistry on frozen sections: 10g/mL. Western Blot: 1 - 2g/mL, detects a band of approximately 24 kDa in Raji cell lysates Other applications not tested. Optimal dilutions are dependent on conditions and should be determined by the user.
Restrictions:	For Research Use only

Handling

Concentration:	1.0 mg/mL
Buffer:	Phosphate buffered saline (PBS), 0.02 % Sodium Azide
Preservative:	Sodium azide
Precaution of Use:	This product contains sodium azide: a POISONOUS AND HAZARDOUS SUBSTANCE which should be handled by trained staff only.
Handling Advice:	Avoid repeated freezing and thawing.
Storage:	4 °C/-20 °C
Storage Comment:	Store the antibody undiluted at 2-8 °C for up to one month or (in aliquots) at -20 °C for longer.

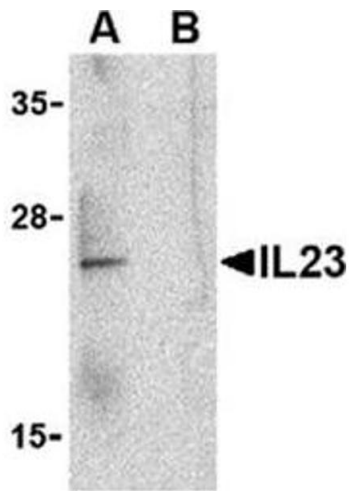


Image 1.

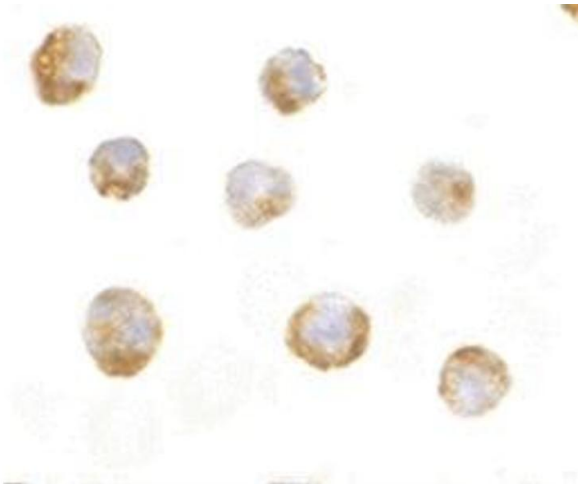


Image 2.