



[Go to Product page](#)

Datasheet for ABIN3187482

## anti-VPS26B antibody (Internal Region)

### 1 Image

#### Overview

Quantity:	100 µL
Target:	VPS26B
Binding Specificity:	Internal Region
Reactivity:	Human, Mouse
Host:	Rabbit
Clonality:	Polyclonal
Application:	ELISA, Western Blotting (WB)

#### Product Details

Immunogen:	Synthesized peptide derived from the Internal region of human VPS26B.
Isotype:	IgG
Specificity:	VPS26B Polyclonal Antibody detects endogenous levels of VPS26B protein.
Characteristics:	Rabbit Polyclonal to VPS26B.
Purification:	The antibody was affinity-purified from rabbit antiserum by affinity-chromatography using epitope-specific immunogen.

#### Target Details

Target:	VPS26B
Alternative Name:	VPS26B ( <a href="#">VPS26B Products</a> )
Molecular Weight:	45 kDa

## Target Details

Gene ID:	112936
UniProt:	<a href="#">Q4G0F5</a>
Pathways:	<a href="#">Cellular Glucan Metabolic Process</a>

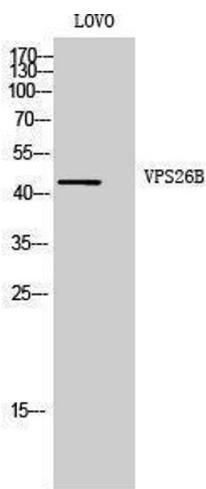
## Application Details

Application Notes:	WB 1:500-1:2000, ELISA 1:10000,
Restrictions:	For Research Use only

## Handling

Format:	Liquid
Concentration:	1 mg/mL
Buffer:	Liquid in PBS containing 50 % glycerol, 0.5 % BSA and 0.02 % sodium azide.
Preservative:	Sodium azide
Precaution of Use:	This product contains Sodium azide: a POISONOUS AND HAZARDOUS SUBSTANCE which should be handled by trained staff only.
Handling Advice:	Avoid repeated freeze/thaw cycles.
Storage:	-20 °C
Storage Comment:	Store at -20°C.

## Validation report #103932 for Western Blotting (WB)



### Western Blotting

Image 1.