

Datasheet for ABIN3187488

**anti-WASF2 antibody (Internal Region)**[Go to Product page](#)**1** Image

## Overview

Quantity:	100 µL
Target:	WASF2
Binding Specificity:	Internal Region
Reactivity:	Human, Mouse, Rat
Host:	Rabbit
Clonality:	Polyclonal
Conjugate:	This WASF2 antibody is un-conjugated
Application:	ELISA, Western Blotting (WB), Immunohistochemistry (IHC)

## Product Details

Immunogen:	Synthesized peptide derived from the Internal region of human WAVE2.
Isotype:	IgG
Specificity:	WAVE2 Polyclonal Antibody detects endogenous levels of WAVE2 protein.
Characteristics:	Rabbit Polyclonal to WAVE2.
Purification:	The antibody was affinity-purified from rabbit antiserum by affinity-chromatography using epitope-specific immunogen.

## Target Details

Target:	WASF2
Alternative Name:	WAVE2 ( <a href="#">WASF2 Products</a> )

### Target Details

Molecular Weight:	55 kDa
Gene ID:	10163
UniProt:	<a href="#">Q9Y6W5</a>
Pathways:	<a href="#">RTK Signaling</a>

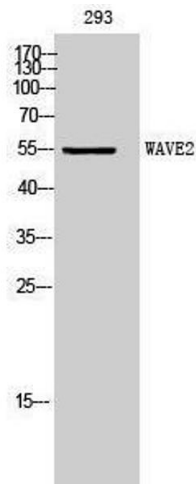
### Application Details

Application Notes:	WB 1:500-1:2000, IHC 1:100-1:300, ELISA 1:5000,
Restrictions:	For Research Use only

### Handling

Format:	Liquid
Concentration:	1 mg/mL
Buffer:	Liquid in PBS containing 50 % glycerol, 0.5 % BSA and 0.02 % sodium azide.
Preservative:	Sodium azide
Precaution of Use:	This product contains Sodium azide: a POISONOUS AND HAZARDOUS SUBSTANCE which should be handled by trained staff only.
Handling Advice:	Avoid repeated freeze/thaw cycles.
Storage:	-20 °C
Storage Comment:	Store at -20°C.

### Images



#### Western Blotting

Image 1.