



[Go to Product page](#)

Datasheet for ABIN3187523  
**anti-ZBTB40 antibody (C-Term)**

1 Image

### Overview

Quantity:	100 µL
Target:	ZBTB40
Binding Specificity:	C-Term
Reactivity:	Human, Mouse
Host:	Rabbit
Clonality:	Polyclonal
Application:	Western Blotting (WB), ELISA, Immunohistochemistry (IHC)

### Product Details

Immunogen:	Synthesized peptide derived from the C-terminal region of human ZBTB40.
Isotype:	IgG
Specificity:	ZBTB40 Polyclonal Antibody detects endogenous levels of ZBTB40 protein.
Characteristics:	Rabbit Polyclonal to ZBTB40.
Purification:	The antibody was affinity-purified from rabbit antiserum by affinity-chromatography using epitope-specific immunogen.

### Target Details

Target:	ZBTB40
Alternative Name:	ZBTB40 ( <a href="#">ZBTB40 Products</a> )
Molecular Weight:	140 kDa

## Target Details

Gene ID: 9923

UniProt: [Q9NUA8](#)

## Application Details

Application Notes: WB 1:500-1:2000, IHC 1:100-1:300, ELISA 1:10000,

Restrictions: For Research Use only

## Handling

Format: Liquid

Concentration: 1 mg/mL

Buffer: Liquid in PBS containing 50 % glycerol, 0.5 % BSA and 0.02 % sodium azide.

Preservative: Sodium azide

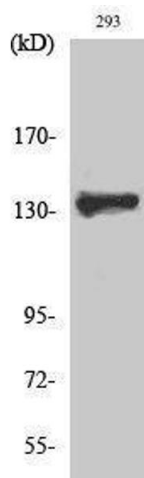
Precaution of Use: This product contains Sodium azide: a POISONOUS AND HAZARDOUS SUBSTANCE which should be handled by trained staff only.

Handling Advice: Avoid repeated freeze/thaw cycles.

Storage: -20 °C

Storage Comment: Store at -20°C.

## Images



### Western Blotting

Image 1.