

Datasheet for ABIN3187612

**anti-METTL3 antibody (Internal Region)**[Go to Product page](#)**1** Image

## Overview

Quantity:	100 µL
Target:	METTL3
Binding Specificity:	Internal Region
Reactivity:	Human, Rat, Mouse
Host:	Rabbit
Clonality:	Polyclonal
Conjugate:	This METTL3 antibody is un-conjugated
Application:	Western Blotting (WB), ELISA

## Product Details

Immunogen:	Synthesized peptide derived from the Internal region of human M6A.
Isotype:	IgG
Specificity:	M6A Polyclonal Antibody detects endogenous levels of M6A protein.
Characteristics:	Rabbit Polyclonal to M6A.
Purification:	The antibody was affinity-purified from rabbit antiserum by affinity-chromatography using epitope-specific immunogen.

## Target Details

Target:	METTL3
Alternative Name:	M6A ( <a href="#">METTL3 Products</a> )

### Target Details

Molecular Weight:	31 kDa
Gene ID:	2823
UniProt:	<a href="#">P51674</a>

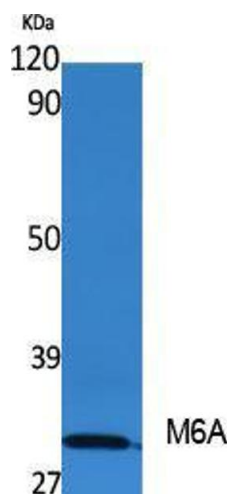
### Application Details

Application Notes:	WB 1:500-1:2000, ELISA 1:5000,
Restrictions:	For Research Use only

### Handling

Format:	Liquid
Concentration:	1 mg/mL
Buffer:	Liquid in PBS containing 50 % glycerol, 0.5 % BSA and 0.02 % sodium azide.
Preservative:	Sodium azide
Precaution of Use:	This product contains Sodium azide: a POISONOUS AND HAZARDOUS SUBSTANCE which should be handled by trained staff only.
Handling Advice:	Avoid repeated freeze/thaw cycles.
Storage:	-20 °C
Storage Comment:	Store at -20°C.

### Images



#### Western Blotting

Image 1.