



[Go to Product page](#)

Datasheet for ABIN3187617

anti-STAT2 antibody (Tyr1221, Tyr1222)

5 Images

Overview

Quantity:	100 µL
Target:	STAT2
Binding Specificity:	Tyr1221, Tyr1222
Reactivity:	Human, Mouse, Rat
Host:	Rabbit
Clonality:	Polyclonal
Conjugate:	This STAT2 antibody is un-conjugated
Application:	Western Blotting (WB), ELISA, Immunohistochemistry (Paraffin-embedded Sections) (IHC (p))

Product Details

Immunogen:	Synthesized peptide derived from human Stat2 around the non-phosphorylation site of Y631.
Isotype:	IgG
Specificity:	Stat2 Polyclonal Antibody detects endogenous levels of Stat2 protein.
Characteristics:	Rabbit Polyclonal to Stat2.
Purification:	The antibody was affinity-purified from rabbit antiserum by affinity-chromatography using epitope-specific immunogen.

Target Details

Target:	STAT2
Alternative Name:	Stat2 (STAT2 Products)

Target Details

Molecular Weight:	180 kDa
Gene ID:	6773
UniProt:	P52630
Pathways:	JAK-STAT Signaling , Hepatitis C , CXCR4-mediated Signaling Events

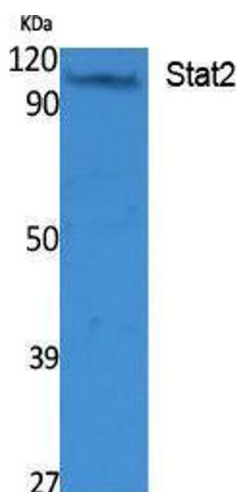
Application Details

Application Notes:	WB 1:500-1:2000, IHC-P 1:100-300, ELISA 1:10000,
Restrictions:	For Research Use only

Handling

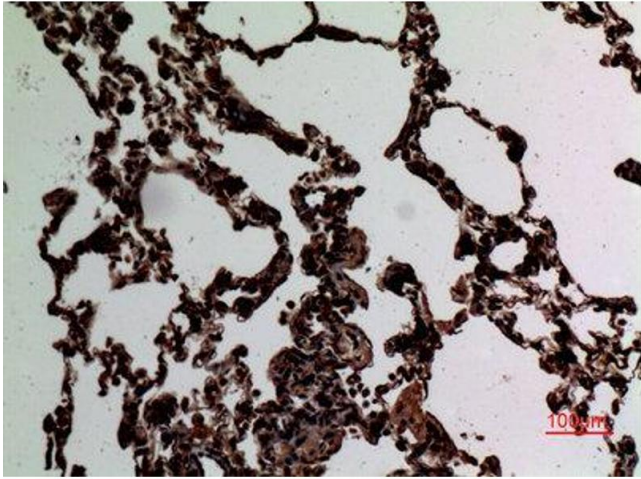
Format:	Liquid
Concentration:	1 mg/mL
Buffer:	Liquid in PBS containing 50 % glycerol, 0.5 % BSA and 0.02 % sodium azide.
Preservative:	Sodium azide
Precaution of Use:	This product contains Sodium azide: a POISONOUS AND HAZARDOUS SUBSTANCE which should be handled by trained staff only.
Handling Advice:	Avoid repeated freeze/thaw cycles.
Storage:	-20 °C
Storage Comment:	Store at -20°C.

Images



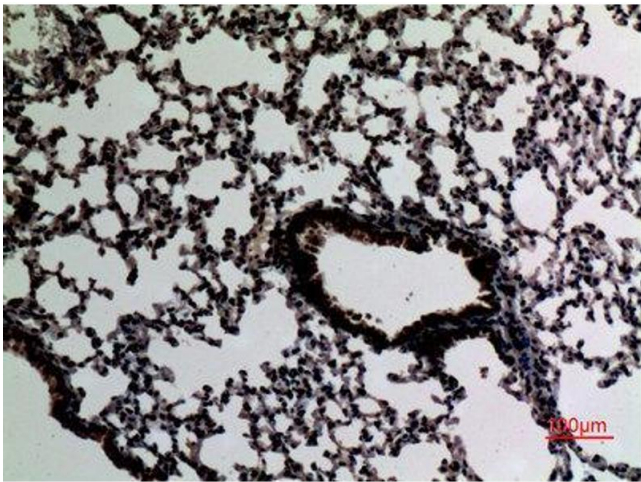
Western Blotting

Image 1.



Immunohistochemistry

Image 2. Immunohistochemistry (IHC) analysis of paraffin-embedded Rat Lung, antibody was diluted at 1:100.



Immunohistochemistry

Image 3. Immunohistochemistry (IHC) analysis of paraffin-embedded Mouse Lung, antibody was diluted at 1:100.

Please check the [product details page](#) for more images. Overall 5 images are available for ABIN3187617.