



[Go to Product page](#)

Datasheet for ABIN3187624  
**anti-ABCG1 antibody (C-Term)**

3 Images

Overview

Quantity:	100 µL
Target:	ABCG1
Binding Specificity:	C-Term
Reactivity:	Human, Mouse, Rat
Host:	Rabbit
Clonality:	Polyclonal
Conjugate:	This ABCG1 antibody is un-conjugated
Application:	Western Blotting (WB), ELISA, Immunohistochemistry (Paraffin-embedded Sections) (IHC (p))

Product Details

Immunogen:	Synthesized peptide derived from the C-terminal region of human ABCG1.
Isotype:	IgG
Specificity:	ABCG1 Polyclonal Antibody detects endogenous levels of ABCG1 protein.
Characteristics:	Rabbit Polyclonal to ABCG1.
Purification:	The antibody was affinity-purified from rabbit antiserum by affinity-chromatography using epitope-specific immunogen.

Target Details

Target:	ABCG1
Alternative Name:	ABCG1 ( <a href="#">ABCG1 Products</a> )

## Target Details

Molecular Weight: 76 kDa

Gene ID: 9619

UniProt: [P45844](#)

Pathways: [Lipid Metabolism](#)

## Application Details

Application Notes: WB 1:500-1:2000, IHC-P 1:100-300, ELISA 1:10000,

Restrictions: For Research Use only

## Handling

Format: Liquid

Concentration: 1 mg/mL

Buffer: Liquid in PBS containing 50 % glycerol, 0.5 % BSA and 0.02 % sodium azide.

Preservative: Sodium azide

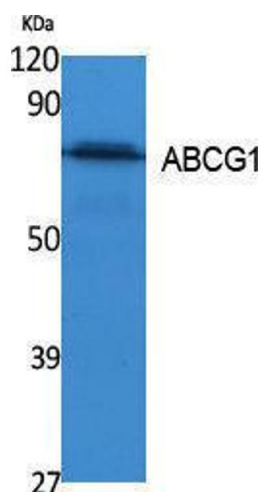
Precaution of Use: This product contains Sodium azide: a POISONOUS AND HAZARDOUS SUBSTANCE which should be handled by trained staff only.

Handling Advice: Avoid repeated freeze/thaw cycles.

Storage: -20 °C

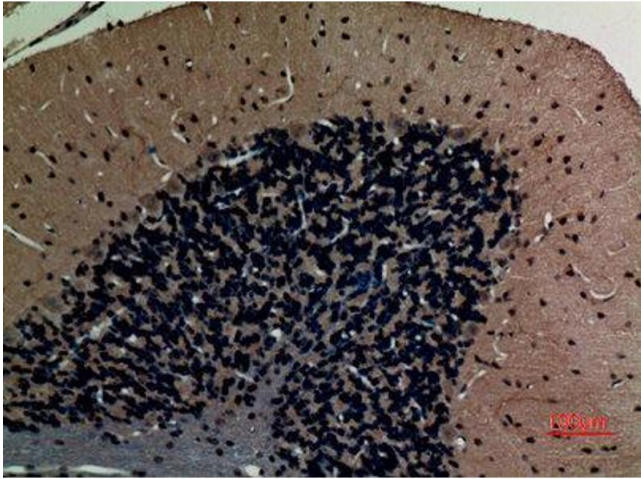
Storage Comment: Store at -20°C.

## Images



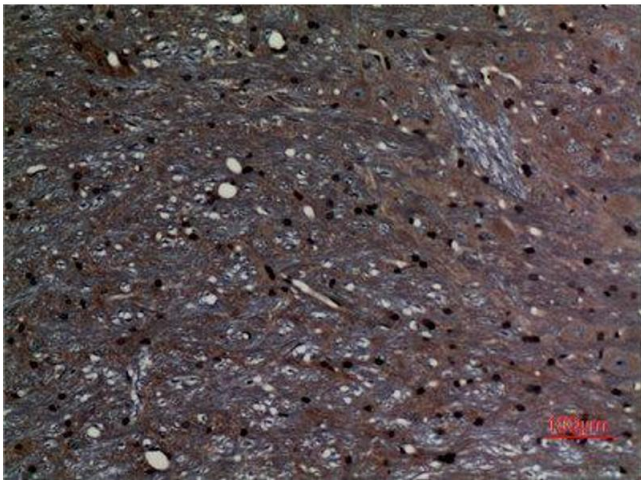
### Western Blotting

Image 1.



### Immunohistochemistry

**Image 2.** Immunohistochemistry (IHC) analysis of paraffin-embedded Rat Brain, antibody was diluted at 1:100.



### Immunohistochemistry

**Image 3.** Immunohistochemistry (IHC) analysis of paraffin-embedded Rat Brain, antibody was diluted at 1:100.