



[Go to Product page](#)

Datasheet for ABIN3187638

anti-SV2C antibody (Internal Region)

2 Images

Overview

| | |
|----------------------|---|
| Quantity: | 100 µL |
| Target: | SV2C |
| Binding Specificity: | Internal Region |
| Reactivity: | Human, Rat, Mouse |
| Host: | Rabbit |
| Clonality: | Polyclonal |
| Application: | Western Blotting (WB), ELISA, Immunohistochemistry (Paraffin-embedded Sections) (IHC (p)) |

Product Details

| | |
|------------------|---|
| Immunogen: | Synthesized peptide derived from the Internal region of human SV2C. |
| Isotype: | IgG |
| Specificity: | SV2C Polyclonal Antibody detects endogenous levels of SV2C protein. |
| Characteristics: | Rabbit Polyclonal to SV2C. |
| Purification: | The antibody was affinity-purified from rabbit antiserum by affinity-chromatography using epitope-specific immunogen. |

Target Details

| | |
|-------------------|--|
| Target: | SV2C |
| Alternative Name: | SV2C (SV2C Products) |
| Molecular Weight: | 83 kDa |

Target Details

Gene ID: 22987

UniProt: [Q496J9](#)

Application Details

Application Notes: WB 1:500-1:2000, IHC-P 1:100-300, ELISA 1:20000,

Restrictions: For Research Use only

Handling

Format: Liquid

Concentration: 1 mg/mL

Buffer: Liquid in PBS containing 50 % glycerol, 0.5 % BSA and 0.02 % sodium azide.

Preservative: Sodium azide

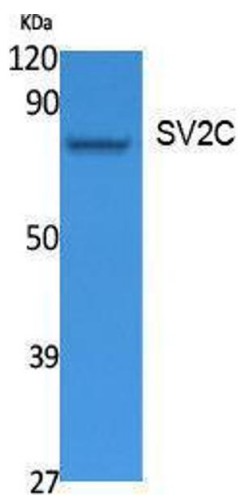
Precaution of Use: This product contains Sodium azide: a POISONOUS AND HAZARDOUS SUBSTANCE which should be handled by trained staff only.

Handling Advice: Avoid repeated freeze/thaw cycles.

Storage: -20 °C

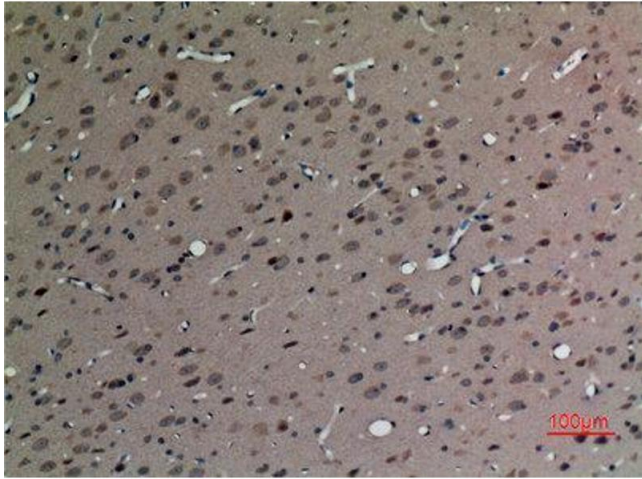
Storage Comment: Store at -20°C.

Images



Western Blotting

Image 1.



Immunohistochemistry

Image 2. Immunohistochemistry (IHC) analysis of paraffin-embedded Rat Brain, antibody was diluted at 1:100.