



[Go to Product page](#)

Datasheet for ABIN3187645

anti-NPRL2 antibody (C-Term)

1 Image

Overview

Quantity:	100 µL
Target:	NPRL2
Binding Specificity:	C-Term
Reactivity:	Human, Mouse, Rat
Host:	Rabbit
Clonality:	Polyclonal
Application:	Western Blotting (WB), ELISA

Product Details

Immunogen:	Synthesized peptide derived from the C-terminal region of human NPRL2.
Isotype:	IgG
Specificity:	NPRL2 Polyclonal Antibody detects endogenous levels of NPRL2 protein.
Characteristics:	Rabbit Polyclonal to NPRL2.
Purification:	The antibody was affinity-purified from rabbit antiserum by affinity-chromatography using epitope-specific immunogen.

Target Details

Target:	NPRL2
Alternative Name:	NPRL2 (NPRL2 Products)
Molecular Weight:	44 kDa

Target Details

Gene ID: 10641

UniProt: [Q8WTW4](#)

Application Details

Application Notes: WB 1:500-1:2000, ELISA 1:20000,

Restrictions: For Research Use only

Handling

Format: Liquid

Concentration: 1 mg/mL

Buffer: Liquid in PBS containing 50 % glycerol, 0.5 % BSA and 0.02 % sodium azide.

Preservative: Sodium azide

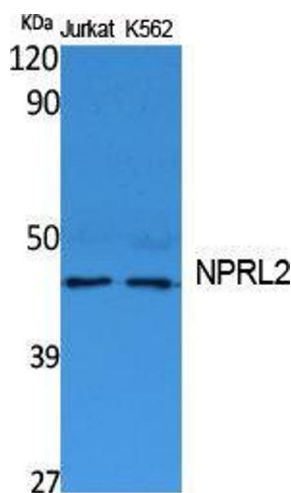
Precaution of Use: This product contains Sodium azide: a POISONOUS AND HAZARDOUS SUBSTANCE which should be handled by trained staff only.

Handling Advice: Avoid repeated freeze/thaw cycles.

Storage: -20 °C

Storage Comment: Store at -20°C.

Images



Western Blotting

Image 1.