

Datasheet for ABIN3187700  
**anti-ALDH1A1 antibody (N-Term)**



[Go to Product page](#)

3 Images

## Overview

Quantity:	100 µL
Target:	ALDH1A1
Binding Specificity:	N-Term
Reactivity:	Human
Host:	Rabbit
Clonality:	Polyclonal
Conjugate:	This ALDH1A1 antibody is un-conjugated
Application:	Western Blotting (WB), ELISA, Immunohistochemistry (Paraffin-embedded Sections) (IHC (p))

## Product Details

Immunogen:	Synthesized peptide derived from the N-terminal region of human ALDH1A1.
Isotype:	IgG
Specificity:	ALDH1A1 Polyclonal Antibody detects endogenous levels of ALDH1A1 protein.
Characteristics:	Rabbit Polyclonal to ALDH1A1.
Purification:	The antibody was affinity-purified from rabbit antiserum by affinity-chromatography using epitope-specific immunogen.

## Target Details

Target:	ALDH1A1
Alternative Name:	ALDH1A1 ( <a href="#">ALDH1A1 Products</a> )

### Target Details

Molecular Weight:	55 kDa
Gene ID:	216
UniProt:	<a href="#">P00352</a>
Pathways:	<a href="#">Dopaminergic Neurogenesis</a>

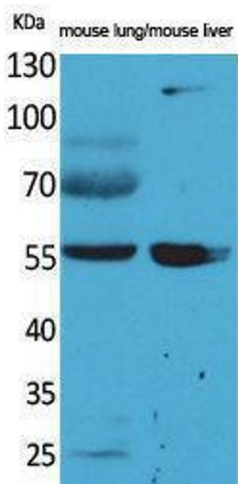
### Application Details

Application Notes:	WB 1:500-1:2000, IHC-P 1:100-300, ELISA 1:20000,
Restrictions:	For Research Use only

### Handling

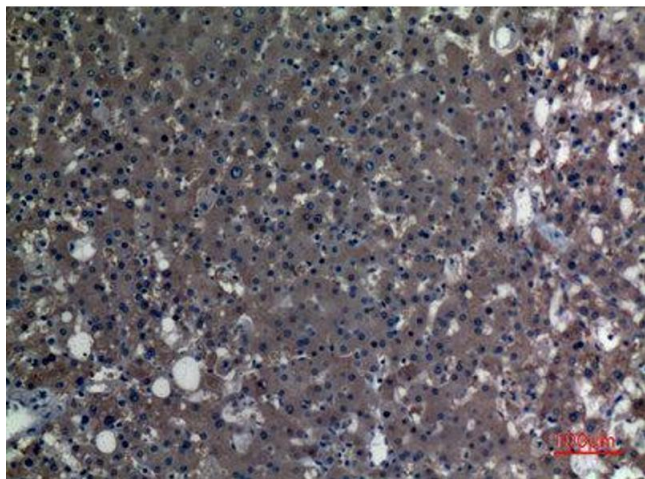
Format:	Liquid
Concentration:	1 mg/mL
Buffer:	Liquid in PBS containing 50 % glycerol, 0.5 % BSA and 0.02 % sodium azide.
Preservative:	Sodium azide
Precaution of Use:	This product contains Sodium azide: a POISONOUS AND HAZARDOUS SUBSTANCE which should be handled by trained staff only.
Handling Advice:	Avoid repeated freeze/thaw cycles.
Storage:	-20 °C
Storage Comment:	Store at -20°C.

### Images



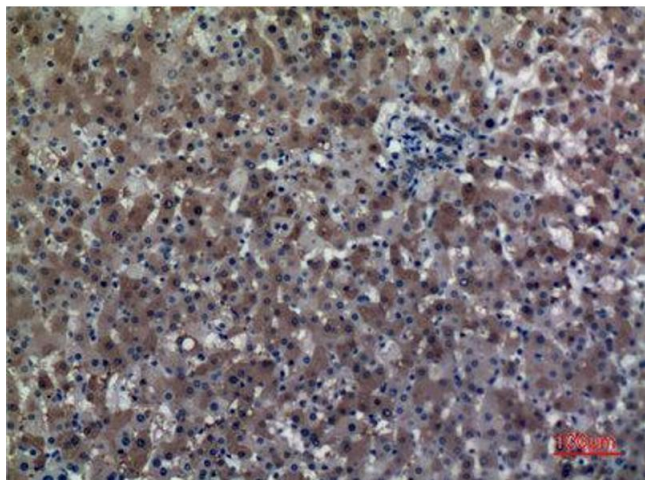
#### Western Blotting

Image 1.



#### Immunohistochemistry

**Image 2.** Immunohistochemistry (IHC) analysis of paraffin-embedded Human Liver, antibody was diluted at 1:100.



#### Immunohistochemistry

**Image 3.** Immunohistochemistry (IHC) analysis of paraffin-embedded Human Liver, antibody was diluted at 1:100.