



[Go to Product page](#)

Datasheet for ABIN3187718
anti-FGF20 antibody (Internal Region)

3 Images

Overview

Quantity:	100 µL
Target:	FGF20
Binding Specificity:	Internal Region
Reactivity:	Mouse, Rat, Human
Host:	Rabbit
Clonality:	Polyclonal
Application:	Western Blotting (WB), ELISA, Immunohistochemistry (Paraffin-embedded Sections) (IHC (p))

Product Details

Immunogen:	Synthesized peptide derived from the Internal region of human FGF-20.
Isotype:	IgG
Specificity:	FGF-20 Polyclonal Antibody detects endogenous levels of FGF-20 protein.
Characteristics:	Rabbit Polyclonal to FGF-20.
Purification:	The antibody was affinity-purified from rabbit antiserum by affinity-chromatography using epitope-specific immunogen.

Target Details

Target:	FGF20
Alternative Name:	FGF-20 (FGF20 Products)
Molecular Weight:	23 45 kDa

Target Details

Gene ID:	26281
UniProt:	Q9NP95
Pathways:	Fc-epsilon Receptor Signaling Pathway , EGFR Signaling Pathway , Neurotrophin Signaling Pathway

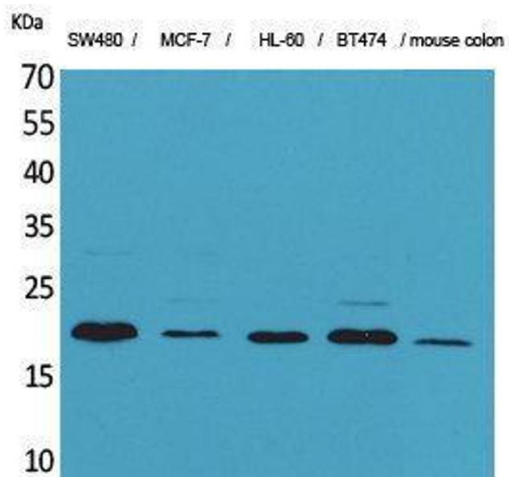
Application Details

Application Notes:	WB 1:500-1:2000, IHC-P 1:100-300, ELISA 1:20000,
Restrictions:	For Research Use only

Handling

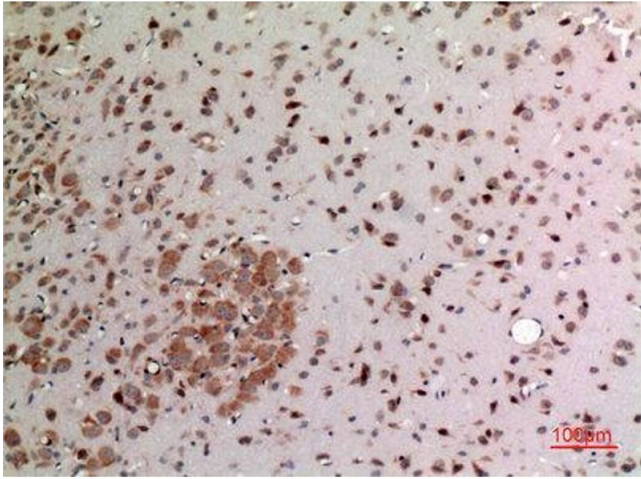
Format:	Liquid
Concentration:	1 mg/mL
Buffer:	Liquid in PBS containing 50 % glycerol, 0.5 % BSA and 0.02 % sodium azide.
Preservative:	Sodium azide
Precaution of Use:	This product contains Sodium azide: a POISONOUS AND HAZARDOUS SUBSTANCE which should be handled by trained staff only.
Handling Advice:	Avoid repeated freeze/thaw cycles.
Storage:	-20 °C
Storage Comment:	Store at -20°C.

Images



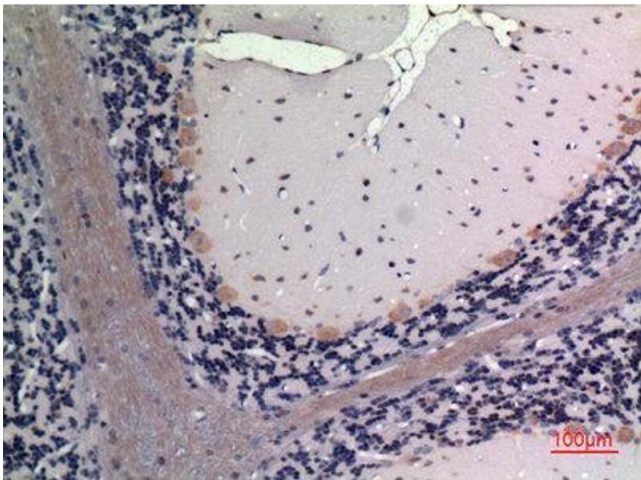
Western Blotting

Image 1.



Immunohistochemistry

Image 2. Immunohistochemistry (IHC) analysis of paraffin-embedded Rat Brain, antibody was diluted at 1:100.



Immunohistochemistry

Image 3. Immunohistochemistry (IHC) analysis of paraffin-embedded Rat Brain, antibody was diluted at 1:100.