



[Go to Product page](#)

Datasheet for ABIN3187821
anti-GDF5 antibody (Internal Region)

4 Images

Overview

Quantity:	100 µL
Target:	GDF5
Binding Specificity:	Internal Region
Reactivity:	Human, Mouse, Rat
Host:	Rabbit
Clonality:	Polyclonal
Conjugate:	This GDF5 antibody is un-conjugated
Application:	Western Blotting (WB), ELISA, Immunohistochemistry (Paraffin-embedded Sections) (IHC (p))

Product Details

Immunogen:	Synthesized peptide derived from the Internal region of human GDF-5.
Isotype:	IgG
Specificity:	GDF-5 Polyclonal Antibody detects endogenous levels of GDF-5 protein.
Characteristics:	Rabbit Polyclonal to GDF-5.
Purification:	The antibody was affinity-purified from rabbit antiserum by affinity-chromatography using epitope-specific immunogen.

Target Details

Target:	GDF5
Alternative Name:	GDF-5 (GDF5 Products)

Target Details

Molecular Weight: 55 kDa

Gene ID: 8200

UniProt: [P43026](#)

Application Details

Application Notes: WB 1:500-1:2000, IHC-P 1:100-1:300, ELISA 1:20000,

Restrictions: For Research Use only

Handling

Format: Liquid

Concentration: 1 mg/mL

Buffer: Liquid in PBS containing 50 % glycerol, 0.5 % BSA and 0.02 % sodium azide.

Preservative: Sodium azide

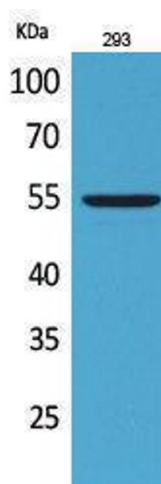
Precaution of Use: This product contains Sodium azide: a POISONOUS AND HAZARDOUS SUBSTANCE which should be handled by trained staff only.

Handling Advice: Avoid repeated freeze/thaw cycles.

Storage: -20 °C

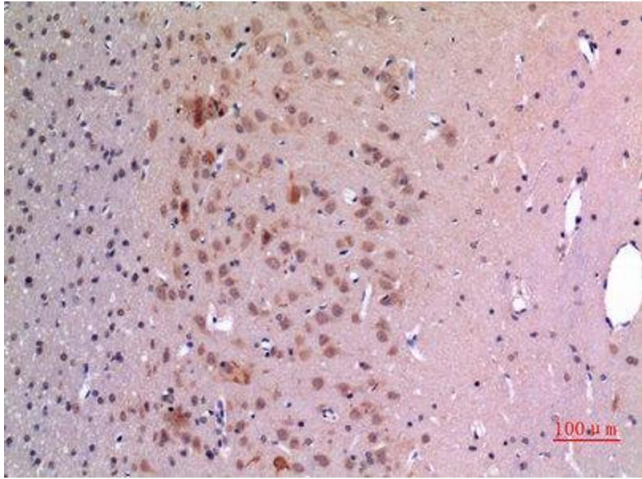
Storage Comment: Store at -20°C.

Images



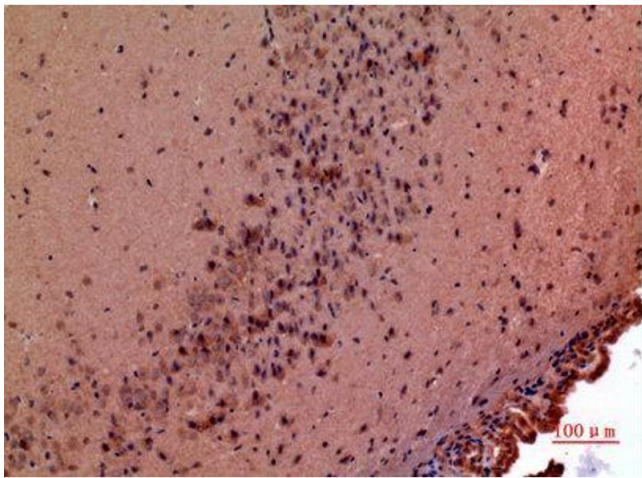
Western Blotting

Image 1.



Immunohistochemistry

Image 2. Immunohistochemistry (IHC) analysis of paraffin-embedded Rat Brain, antibody was diluted at 1:100.



Immunohistochemistry

Image 3. Immunohistochemistry (IHC) analysis of paraffin-embedded Mouse Brain, antibody was diluted at 1:100.

Please check the [product details page](#) for more images. Overall 4 images are available for ABIN3187821.