

Datasheet for ABIN3187827
anti-BCL6 antibody (Internal Region)

5 Images

[Go to Product page](#)

Overview

| | |
|----------------------|---|
| Quantity: | 100 µL |
| Target: | BCL6 |
| Binding Specificity: | Internal Region |
| Reactivity: | Human, Mouse, Rat |
| Host: | Rabbit |
| Clonality: | Polyclonal |
| Conjugate: | This BCL6 antibody is un-conjugated |
| Application: | Western Blotting (WB), ELISA, Immunohistochemistry (Paraffin-embedded Sections) (IHC (p)) |

Product Details

| | |
|------------------|---|
| Immunogen: | Synthesized peptide derived from the Internal region of human Bcl-6. |
| Isotype: | IgG |
| Specificity: | Bcl-6 Polyclonal Antibody detects endogenous levels of Bcl-6 protein. |
| Characteristics: | Rabbit Polyclonal to Bcl-6. |
| Purification: | The antibody was affinity-purified from rabbit antiserum by affinity-chromatography using epitope-specific immunogen. |

Target Details

| | |
|-------------------|---|
| Target: | BCL6 |
| Alternative Name: | Bcl-6 (BCL6 Products) |

Target Details

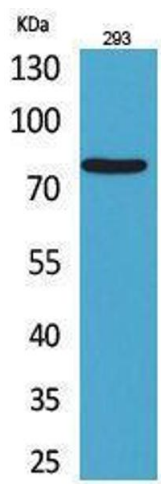
| | |
|-------------------|--|
| Molecular Weight: | 78 kDa |
| Gene ID: | 604 |
| UniProt: | P41182 |
| Pathways: | Chromatin Binding , Regulation of Leukocyte Mediated Immunity , Production of Molecular Mediator of Immune Response , Protein targeting to Nucleus |

Application Details

| | |
|--------------------|--|
| Application Notes: | WB 1:500-1:2000, IHC-P 1:100-1:300, ELISA 1:20000, |
| Restrictions: | For Research Use only |

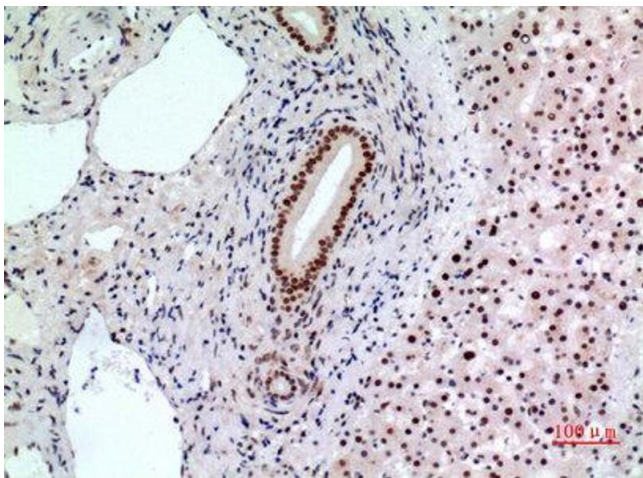
Handling

| | |
|--------------------|--|
| Format: | Liquid |
| Concentration: | 1 mg/mL |
| Buffer: | Liquid in PBS containing 50 % glycerol, 0.5 % BSA and 0.02 % sodium azide. |
| Preservative: | Sodium azide |
| Precaution of Use: | This product contains Sodium azide: a POISONOUS AND HAZARDOUS SUBSTANCE which should be handled by trained staff only. |
| Handling Advice: | Avoid repeated freeze/thaw cycles. |
| Storage: | -20 °C |
| Storage Comment: | Store at -20°C. |



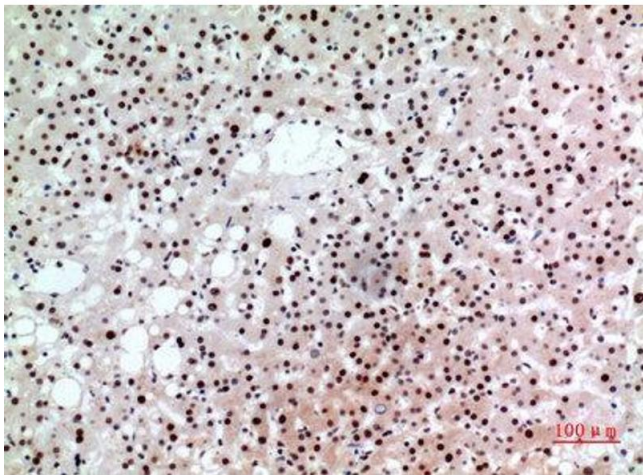
Western Blotting

Image 1.



Immunohistochemistry

Image 2. Immunohistochemistry (IHC) analysis of paraffin-embedded Human Liver, antibody was diluted at 1:100.



Immunohistochemistry

Image 3. Immunohistochemistry (IHC) analysis of paraffin-embedded Human Liver, antibody was diluted at 1:100.

Please check the [product details page](#) for more images. Overall 5 images are available for ABIN3187827.