



[Go to Product page](#)

Datasheet for ABIN3187830

## anti-RFC1 antibody (Internal Region)

### 1 Image

#### Overview

|                      |                                     |
|----------------------|-------------------------------------|
| Quantity:            | 100 µL                              |
| Target:              | RFC1                                |
| Binding Specificity: | Internal Region                     |
| Reactivity:          | Human, Mouse, Rat                   |
| Host:                | Rabbit                              |
| Clonality:           | Polyclonal                          |
| Conjugate:           | This RFC1 antibody is un-conjugated |
| Application:         | Western Blotting (WB), ELISA        |

#### Product Details

|                  |   |
|------------------|---|
| Immunogen:       | Synthesized peptide derived from the Internal region of human RFC1.   |
| Isotype:         | IgG   |
| Specificity:     | RFC1 Polyclonal Antibody detects endogenous levels of RFC1 protein.   |
| Characteristics: | Rabbit Polyclonal to RFC1.  |
| Purification:    | The antibody was affinity-purified from rabbit antiserum by affinity-chromatography using epitope-specific immunogen. |

#### Target Details

|                   |  |
|-------------------|--|
| Target:           | RFC1                                   |
| Alternative Name: | RFC1 ( <a href="#">RFC1 Products</a> ) |

## Target Details

---

Molecular Weight: 130 kDa

Gene ID: 5981

UniProt: [P35251](#)

Pathways: [Telomere Maintenance](#), [DNA Damage Repair](#), [DNA Replication](#), [Synthesis of DNA](#), [Dicarboxylic Acid Transport](#)

## Application Details

---

Application Notes: WB 1:500-1:2000, ELISA 1:20000,

Restrictions: For Research Use only

## Handling

---

Format: Liquid

Concentration: 1 mg/mL

Buffer: Liquid in PBS containing 50 % glycerol, 0.5 % BSA and 0.02 % sodium azide.

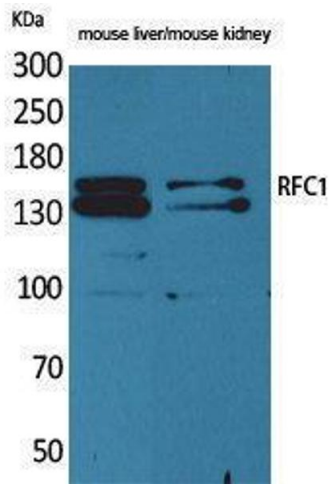
Preservative: Sodium azide

Precaution of Use: This product contains Sodium azide: a POISONOUS AND HAZARDOUS SUBSTANCE which should be handled by trained staff only.

Handling Advice: Avoid repeated freeze/thaw cycles.

Storage: -20 °C

Storage Comment: Store at -20°C.



### Western Blotting

Image 1.