



[Go to Product page](#)

Datasheet for ABIN3187841
anti-KRT8 antibody (Ser726, Ser731)

6 Images

Overview

Quantity:	100 µL
Target:	KRT8
Binding Specificity:	Ser726, Ser731
Reactivity:	Human
Host:	Rabbit
Clonality:	Polyclonal
Application:	Western Blotting (WB), ELISA, Immunohistochemistry (Paraffin-embedded Sections) (IHC (p))

Product Details

Immunogen:	Synthesized peptide derived from human Cytokeratin 8 around the non-acetylation site of K483.
Isotype:	IgG
Specificity:	Cytokeratin 8 Polyclonal Antibody detects endogenous levels of Cytokeratin 8 protein.
Characteristics:	Rabbit Polyclonal to Cytokeratin 8.
Purification:	The antibody was affinity-purified from rabbit antiserum by affinity-chromatography using epitope-specific immunogen.

Target Details

Target:	KRT8
Alternative Name:	Cytokeratin 8 (KRT8 Products)
Molecular Weight:	90 kDa

Target Details

Gene ID: 3856

UniProt: [P05787](#)

Application Details

Application Notes: WB 1:500-1:2000, IHC-P 1:100-1:300, ELISA 1:20000,

Restrictions: For Research Use only

Handling

Format: Liquid

Concentration: 1 mg/mL

Buffer: Liquid in PBS containing 50 % glycerol, 0.5 % BSA and 0.02 % sodium azide.

Preservative: Sodium azide

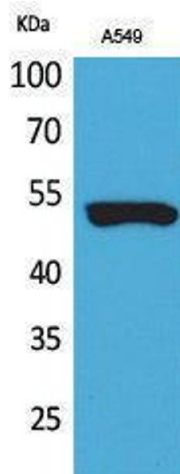
Precaution of Use: This product contains Sodium azide: a POISONOUS AND HAZARDOUS SUBSTANCE which should be handled by trained staff only.

Handling Advice: Avoid repeated freeze/thaw cycles.

Storage: -20 °C

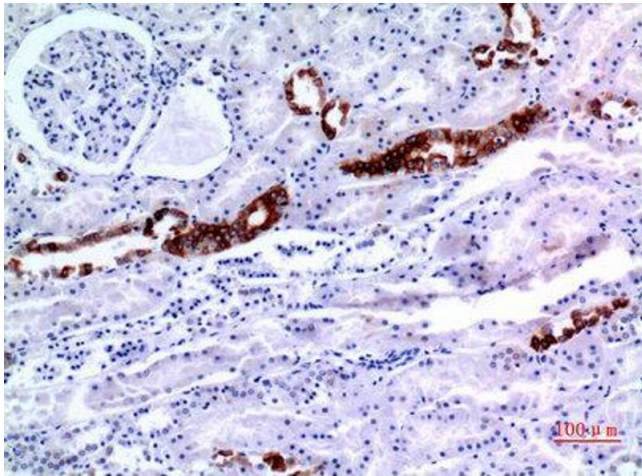
Storage Comment: Store at -20°C.

Images



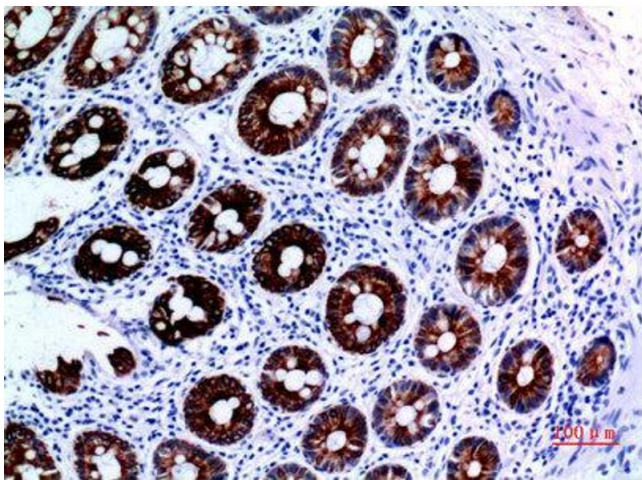
Western Blotting

Image 1.



Immunohistochemistry

Image 2. Immunohistochemistry (IHC) analysis of paraffin-embedded Human Kidney, antibody was diluted at 1:100.



Immunohistochemistry

Image 3. Immunohistochemistry (IHC) analysis of paraffin-embedded Human Colon, antibody was diluted at 1:100.

Please check the [product details page](#) for more images. Overall 6 images are available for ABIN3187841.