



[Go to Product page](#)

Datasheet for ABIN3187842

## anti-pan Keratin antibody (pan)

### 4 Images

#### Overview

Quantity:	100 µL
Target:	pan Keratin (panKRT)
Binding Specificity:	pan
Reactivity:	Human, Rat, Mouse
Host:	Rabbit
Clonality:	Polyclonal
Conjugate:	This pan Keratin antibody is un-conjugated
Application:	Western Blotting (WB), Immunohistochemistry (Paraffin-embedded Sections) (IHC (p)), ELISA

#### Product Details

Immunogen:	Synthesized peptide derived from human Keratin-pan around the non-acetylation site of K185.
Isotype:	IgG
Specificity:	Keratin-pan Polyclonal Antibody detects endogenous levels of Keratin-pan protein.
Characteristics:	Rabbit Polyclonal to Keratin-pan.
Purification:	The antibody was affinity-purified from rabbit antiserum by affinity-chromatography using epitope-specific immunogen.

#### Target Details

Target:	pan Keratin (panKRT)
Alternative Name:	Keratin ( <a href="#">panKRT Products</a> )

## Target Details

---

Molecular Weight:	65433 kDa,65841 kDa,64417 kDa,62378 kDa,60045 kDa,60067 kDa,60025 kDa,57292 kDa,55877 kDa,58923 kDa,57865 kDa,59560 kDa,57836 kDa,53704 kDa,64842 kDa (different Isoforms)
Gene ID:	3849
UniProt:	<a href="#">P35908</a>

## Application Details

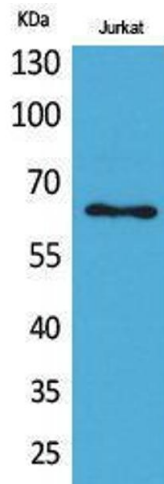
---

Application Notes:	WB 1:500-1:2000, IHC-P 1:100-1:300, ELISA 1:20000,
Restrictions:	For Research Use only

## Handling

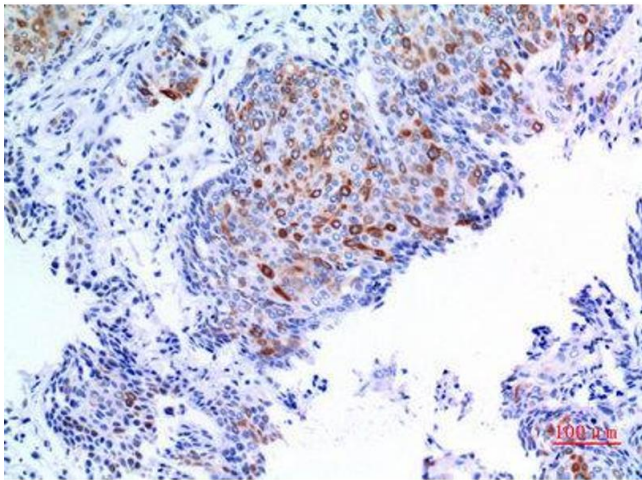
---

Format:	Liquid
Concentration:	1 mg/mL
Buffer:	Liquid in PBS containing 50 % glycerol, 0.5 % BSA and 0.02 % sodium azide.
Preservative:	Sodium azide
Precaution of Use:	This product contains Sodium azide: a POISONOUS AND HAZARDOUS SUBSTANCE which should be handled by trained staff only.
Handling Advice:	Avoid repeated freeze/thaw cycles.
Storage:	-20 °C
Storage Comment:	Store at -20°C.



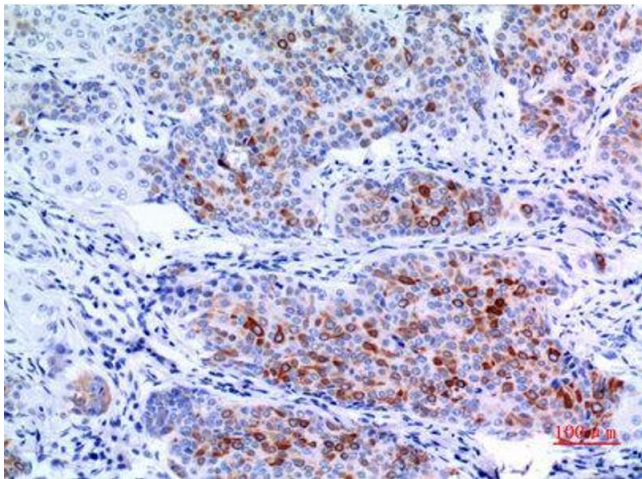
### Western Blotting

**Image 1.**



### Immunohistochemistry

**Image 2.** Immunohistochemistry (IHC) analysis of paraffin-embedded Human Mammary Cancer, antibody was diluted at 1:100.



### Immunohistochemistry

**Image 3.** Immunohistochemistry (IHC) analysis of paraffin-embedded Human Mammary Cancer, antibody was diluted at 1:100.

Please check the [product details page](#) for more images. Overall 4 images are available for ABIN3187842.