

Datasheet for ABIN3187846
anti-XRCC6 antibody (Ser404)

6 Images

[Go to Product page](#)

Overview

Quantity:	100 µL
Target:	XRCC6
Binding Specificity:	Ser404
Reactivity:	Human
Host:	Rabbit
Clonality:	Polyclonal
Conjugate:	This XRCC6 antibody is un-conjugated
Application:	Western Blotting (WB), ELISA, Immunohistochemistry (Paraffin-embedded Sections) (IHC (p))

Product Details

Immunogen:	Synthesized peptide derived from human Ku-70 around the non-acetylation site of K539.
Isotype:	IgG
Specificity:	Ku-70 Polyclonal Antibody detects endogenous levels of Ku-70 protein.
Characteristics:	Rabbit Polyclonal to Ku-70.
Purification:	The antibody was affinity-purified from rabbit antiserum by affinity-chromatography using epitope-specific immunogen.

Target Details

Target:	XRCC6
Alternative Name:	Ku-70 (XRCC6 Products)

Target Details

Molecular Weight:	79 kDa
Gene ID:	2547
UniProt:	P12956
Pathways:	DNA Damage Repair

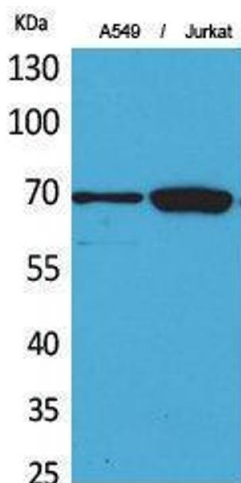
Application Details

Application Notes:	WB 1:500-1:2000, IHC-P 1:100-1:300, ELISA 1:20000,
Restrictions:	For Research Use only

Handling

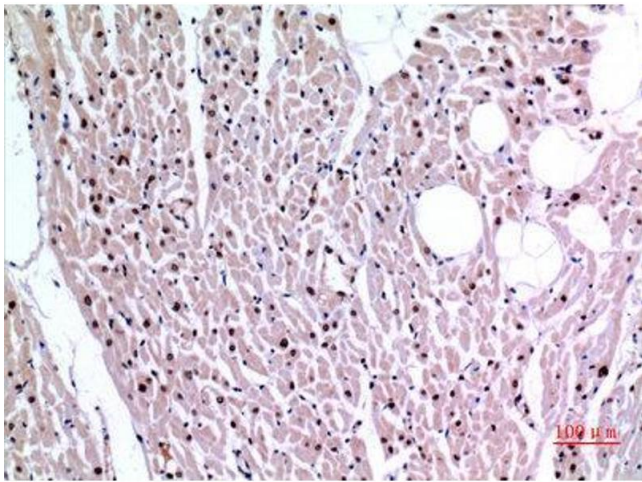
Format:	Liquid
Concentration:	1 mg/mL
Buffer:	Liquid in PBS containing 50 % glycerol, 0.5 % BSA and 0.02 % sodium azide.
Preservative:	Sodium azide
Precaution of Use:	This product contains Sodium azide: a POISONOUS AND HAZARDOUS SUBSTANCE which should be handled by trained staff only.
Handling Advice:	Avoid repeated freeze/thaw cycles.
Storage:	-20 °C
Storage Comment:	Store at -20°C.

Validation report #103457 for Immunohistochemistry (IHC)



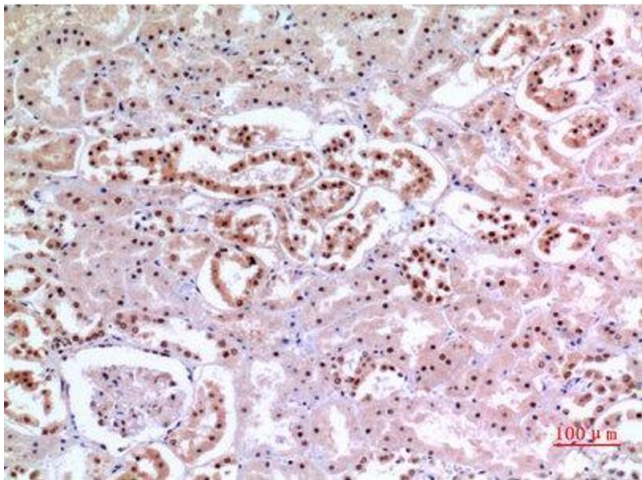
Western Blotting

Image 1.



Immunohistochemistry

Image 2. Immunohistochemistry (IHC) analysis of paraffin-embedded Human Heart, antibody was diluted at 1:100.



Immunohistochemistry

Image 3. Immunohistochemistry (IHC) analysis of paraffin-embedded Human Kidney, antibody was diluted at 1:100.

Please check the [product details page](#) for more images. Overall 6 images are available for ABIN3187846.