

Datasheet for ABIN3187879
anti-MCM7 antibody (Internal Region)

4 Images

[Go to Product page](#)

Overview

Quantity:	100 µL
Target:	MCM7
Binding Specificity:	Internal Region
Reactivity:	Human, Mouse, Rat
Host:	Rabbit
Clonality:	Polyclonal
Application:	Western Blotting (WB), Immunohistochemistry (Paraffin-embedded Sections) (IHC (p)), ELISA

Product Details

Immunogen:	Synthesized peptide derived from the Internal region of human MCM7.
Isotype:	IgG
Specificity:	MCM7 Polyclonal Antibody detects endogenous levels of MCM7 protein.
Characteristics:	Rabbit Polyclonal to MCM7.
Purification:	The antibody was affinity-purified from rabbit antiserum by affinity-chromatography using epitope-specific immunogen.

Target Details

Target:	MCM7
Alternative Name:	MCM7 (MCM7 Products)
Molecular Weight:	81 kDa

Target Details

Gene ID:	4176
UniProt:	P33993
Pathways:	DNA Damage Repair , Mitotic G1-G1/S Phases , DNA Replication , Chromatin Binding , Synthesis of DNA

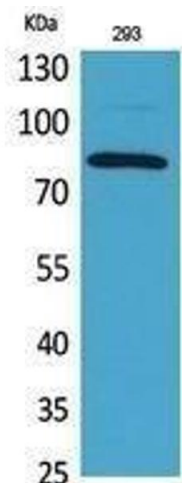
Application Details

Application Notes:	WB 1:500-1:2000, IHC-P 1:100-1:300, ELISA 1:20000,
Restrictions:	For Research Use only

Handling

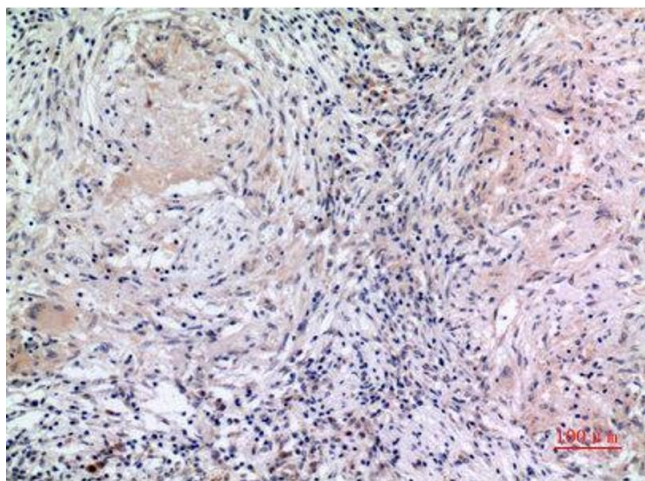
Format:	Liquid
Concentration:	1 mg/mL
Buffer:	Liquid in PBS containing 50 % glycerol, 0.5 % BSA and 0.02 % sodium azide.
Preservative:	Sodium azide
Precaution of Use:	This product contains Sodium azide: a POISONOUS AND HAZARDOUS SUBSTANCE which should be handled by trained staff only.
Handling Advice:	Avoid repeated freeze/thaw cycles.
Storage:	-20 °C
Storage Comment:	Store at -20°C.

Images



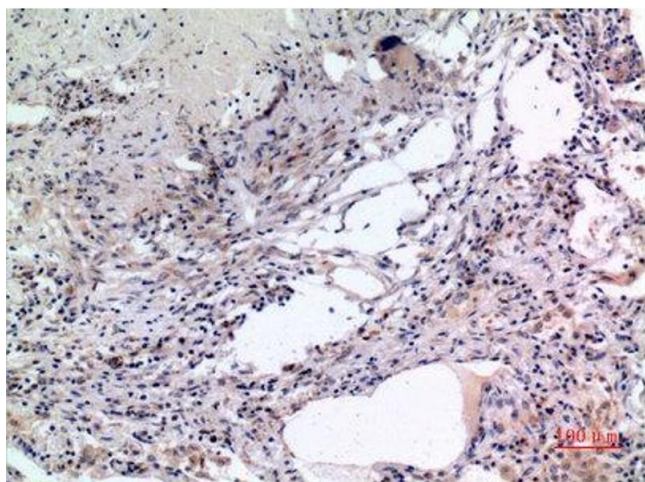
Western Blotting

Image 1.



Immunohistochemistry

Image 2. Immunohistochemistry (IHC) analysis of paraffin-embedded Human Lung, antibody was diluted at 1:100.



Immunohistochemistry

Image 3. Immunohistochemistry (IHC) analysis of paraffin-embedded Human Lung, antibody was diluted at 1:100.

Please check the [product details page](#) for more images. Overall 4 images are available for ABIN3187879.