



[Go to Product page](#)

Datasheet for ABIN3187910
anti-INHBB antibody (C-Term)

5 Images

Overview

Quantity:	100 µL
Target:	INHBB
Binding Specificity:	C-Term
Reactivity:	Human, Mouse, Rat
Host:	Rabbit
Clonality:	Polyclonal
Conjugate:	This INHBB antibody is un-conjugated
Application:	Western Blotting (WB), ELISA, Immunohistochemistry (Paraffin-embedded Sections) (IHC (p))

Product Details

Immunogen:	Synthesized peptide derived from the C-terminal region of human Inhibin beta-B.
Isotype:	IgG
Specificity:	Inhibin β-B Polyclonal Antibody detects endogenous levels of Inhibin β-B protein.
Characteristics:	Rabbit Polyclonal to Inhibin β-B.
Purification:	The antibody was affinity-purified from rabbit antiserum by affinity-chromatography using epitope-specific immunogen.

Target Details

Target:	INHBB
Alternative Name:	Inhibin beta-B (INHBB Products)

Target Details

Molecular Weight:	45 kDa
Gene ID:	3625
UniProt:	P09529
Pathways:	Peptide Hormone Metabolism , Hormone Activity , Negative Regulation of Hormone Secretion

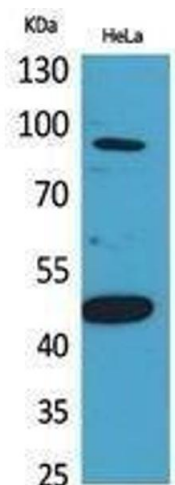
Application Details

Application Notes:	WB 1:500-1:2000, IHC-P 1:100-1:300, ELISA 1:20000,
Restrictions:	For Research Use only

Handling

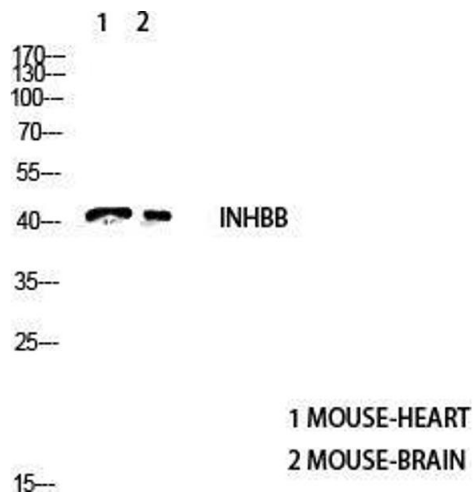
Format:	Liquid
Concentration:	1 mg/mL
Buffer:	Liquid in PBS containing 50 % glycerol, 0.5 % BSA and 0.02 % sodium azide.
Preservative:	Sodium azide
Precaution of Use:	This product contains Sodium azide: a POISONOUS AND HAZARDOUS SUBSTANCE which should be handled by trained staff only.
Handling Advice:	Avoid repeated freeze/thaw cycles.
Storage:	-20 °C
Storage Comment:	Store at -20°C.

Images



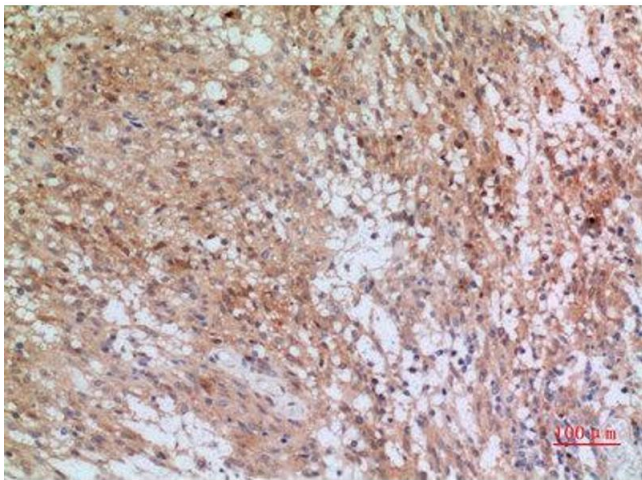
Western Blotting

Image 1.



Western Blotting

Image 2. Western Blot (WB) analysis of Mouse Heart and Mouse Brain using Inhibin beta-B antibody.



Immunohistochemistry

Image 3. Immunohistochemistry (IHC) analysis of paraffin-embedded Human Brain, antibody was diluted at 1:100.

Please check the [product details page](#) for more images. Overall 5 images are available for ABIN3187910.