

Datasheet for ABIN3187915  
**anti-IDH1 antibody (N-Term)**

5 Images

[Go to Product page](#)

## Overview

Quantity:	100 µL
Target:	IDH1
Binding Specificity:	N-Term
Reactivity:	Human, Mouse, Rat
Host:	Rabbit
Clonality:	Polyclonal
Conjugate:	This IDH1 antibody is un-conjugated
Application:	Western Blotting (WB), ELISA, Immunohistochemistry (Paraffin-embedded Sections) (IHC (p))

## Product Details

Immunogen:	Synthesized peptide derived from the N-terminal region of human IDH1.
Isotype:	IgG
Specificity:	IDH1 Polyclonal Antibody detects endogenous levels of IDH1 protein.
Characteristics:	Rabbit Polyclonal to IDH1.
Purification:	The antibody was affinity-purified from rabbit antiserum by affinity-chromatography using epitope-specific immunogen.

## Target Details

Target:	IDH1
Alternative Name:	IDH1 ( <a href="#">IDH1 Products</a> )

## Target Details

Molecular Weight:	46.659 kDa
Gene ID:	3417
UniProt:	<a href="#">O75874</a>
Pathways:	<a href="#">Warburg Effect</a>

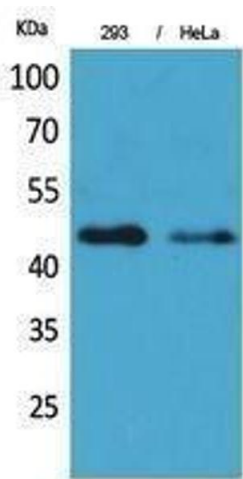
## Application Details

Application Notes:	WB 1:500-1:2000, IHC-P 1:100-1:300, ELISA 1:20000,
Restrictions:	For Research Use only

## Handling

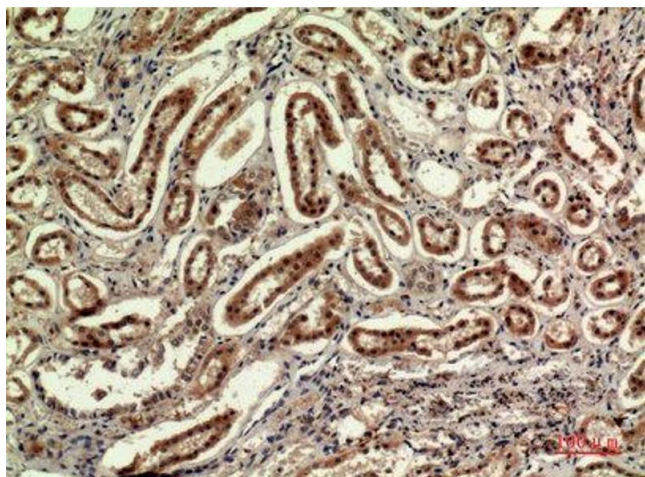
Format:	Liquid
Concentration:	1 mg/mL
Buffer:	Liquid in PBS containing 50 % glycerol, 0.5 % BSA and 0.02 % sodium azide.
Preservative:	Sodium azide
Precaution of Use:	This product contains Sodium azide: a POISONOUS AND HAZARDOUS SUBSTANCE which should be handled by trained staff only.
Handling Advice:	Avoid repeated freeze/thaw cycles.
Storage:	-20 °C
Storage Comment:	Store at -20°C.

## Images



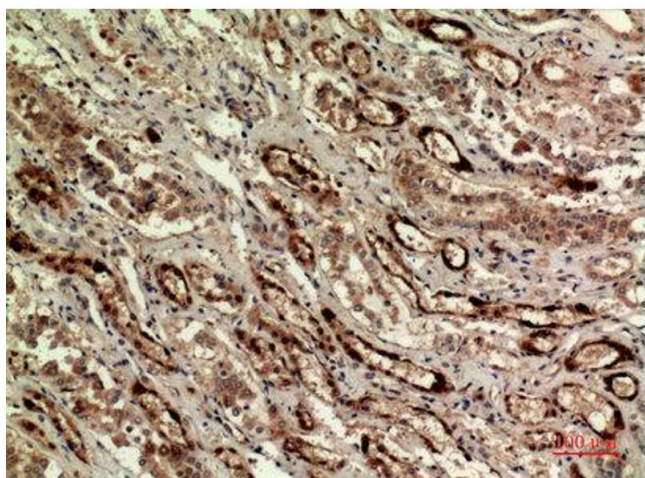
### Western Blotting

Image 1.



#### Immunohistochemistry

**Image 2.** Immunohistochemistry (IHC) analysis of paraffin-embedded Human Kidney, antibody was diluted at 1:100.



#### Immunohistochemistry

**Image 3.** Immunohistochemistry (IHC) analysis of paraffin-embedded Human Kidney, antibody was diluted at 1:100.

Please check the [product details page](#) for more images. Overall 5 images are available for ABIN3187915.