

Datasheet for ABIN3187922
anti-ARNTL antibody (Lys538)

4 Images

[Go to Product page](#)

Overview

Quantity:	100 µL
Target:	ARNTL
Binding Specificity:	Lys538
Reactivity:	Human, Rat, Mouse
Host:	Rabbit
Clonality:	Polyclonal
Conjugate:	This ARNTL antibody is un-conjugated
Application:	Western Blotting (WB), ELISA, Immunohistochemistry (Paraffin-embedded Sections) (IHC (p))

Product Details

Immunogen:	Synthesized peptide derived from human BMAL1 around the non-acetylation site of K538.
Isotype:	IgG
Specificity:	BMAL1 Polyclonal Antibody detects endogenous levels of BMAL1 protein only when non-acetylation at K538.
Characteristics:	Rabbit Polyclonal to BMAL1.
Purification:	The antibody was affinity-purified from rabbit antiserum by affinity-chromatography using epitope-specific immunogen.

Target Details

Target:	ARNTL
---------	-------

Target Details

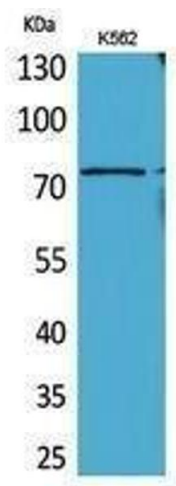
Alternative Name:	BMAL1 (ARNTL Products)
Molecular Weight:	51 kDa
Gene ID:	406
UniProt:	O00327
Pathways:	Regulation of Lipid Metabolism by PPARalpha , Protein targeting to Nucleus , Warburg Effect

Application Details

Application Notes:	WB 1:500-1:2000, IHC-P 1:100-1:300, ELISA 1:20000,
Restrictions:	For Research Use only

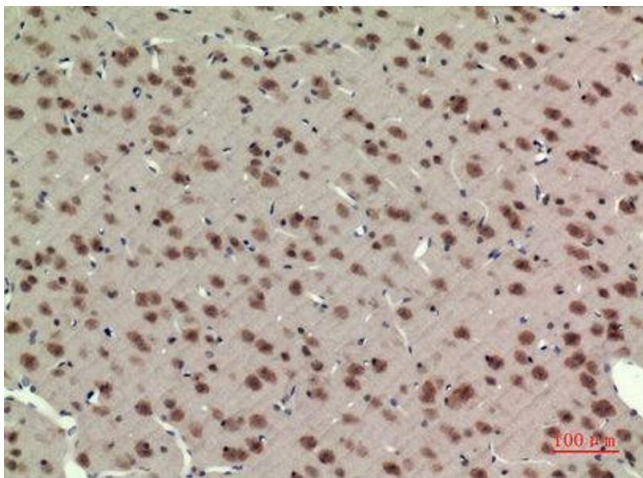
Handling

Format:	Liquid
Concentration:	1 mg/mL
Buffer:	Liquid in PBS containing 50 % glycerol, 0.5 % BSA and 0.02 % sodium azide.
Preservative:	Sodium azide
Precaution of Use:	This product contains Sodium azide: a POISONOUS AND HAZARDOUS SUBSTANCE which should be handled by trained staff only.
Handling Advice:	Avoid repeated freeze/thaw cycles.
Storage:	-20 °C
Storage Comment:	Store at -20°C.



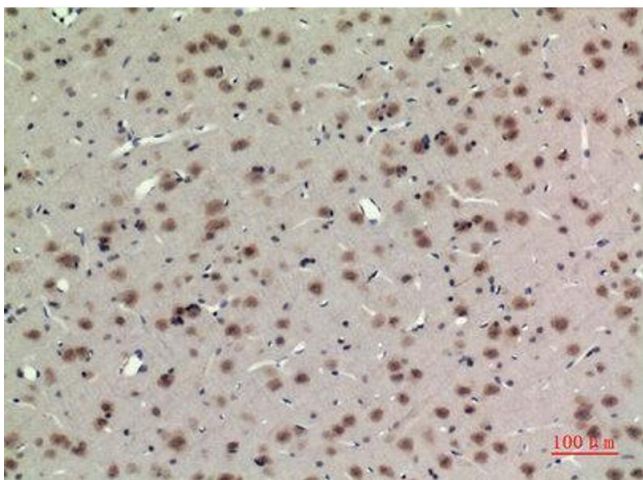
Western Blotting

Image 1.



Immunohistochemistry

Image 2. Immunohistochemistry (IHC) analysis of paraffin-embedded Rat Brain, antibody was diluted at 1:100.



Immunohistochemistry

Image 3. Immunohistochemistry (IHC) analysis of paraffin-embedded Rat Brain, antibody was diluted at 1:100.

Please check the [product details page](#) for more images. Overall 4 images are available for ABIN3187922.