

Datasheet for ABIN3187923
anti-HSP70 antibody (Ser102)



[Go to Product page](#)

3 Images

Overview

Quantity:	100 µL
Target:	HSP70
Binding Specificity:	Ser102
Reactivity:	Human
Host:	Rabbit
Clonality:	Polyclonal
Conjugate:	This HSP70 antibody is un-conjugated
Application:	Western Blotting (WB), ELISA, Immunohistochemistry (Paraffin-embedded Sections) (IHC (p))

Product Details

Immunogen:	Synthesized peptide derived from human HSP70 around the non-acetylation site of K246.
Isotype:	IgG
Specificity:	HSP70 Polyclonal Antibody detects endogenous levels of HSP70 protein only when non-acetylation at K246.
Characteristics:	Rabbit Polyclonal to HSP70.
Purification:	The antibody was affinity-purified from rabbit antiserum by affinity-chromatography using epitope-specific immunogen.

Target Details

Target:	HSP70
---------	-------

Target Details

Alternative Name:	HSP70 (HSP70 Products)
Molecular Weight:	36 kDa
Gene ID:	3303, 3304
UniProt:	P08107

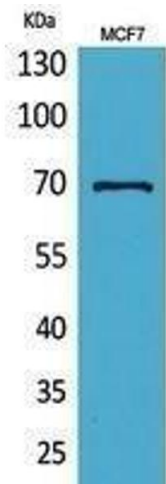
Application Details

Application Notes:	WB 1:500-1:2000, IHC-P 1:100-1:300, ELISA 1:20000,
Restrictions:	For Research Use only

Handling

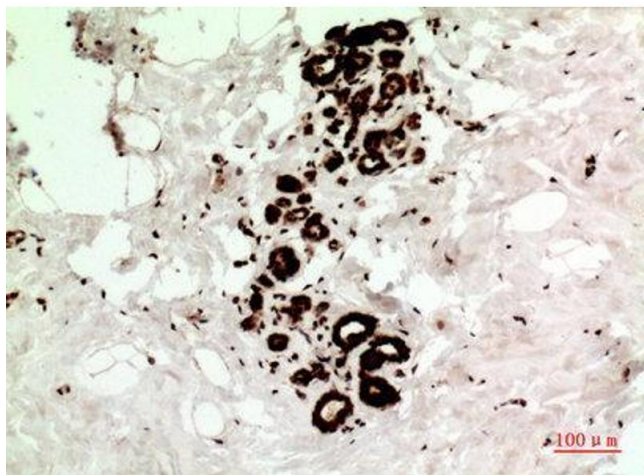
Format:	Liquid
Concentration:	1 mg/mL
Buffer:	Liquid in PBS containing 50 % glycerol, 0.5 % BSA and 0.02 % sodium azide.
Preservative:	Sodium azide
Precaution of Use:	This product contains Sodium azide: a POISONOUS AND HAZARDOUS SUBSTANCE which should be handled by trained staff only.
Handling Advice:	Avoid repeated freeze/thaw cycles.
Storage:	-20 °C
Storage Comment:	Store at -20°C.

Images



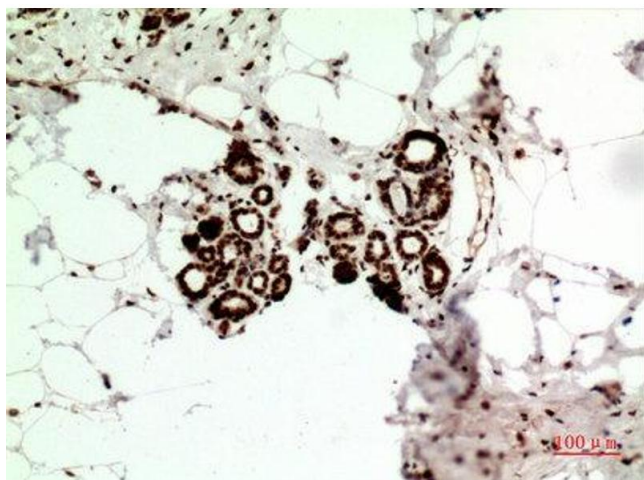
Western Blotting

Image 1.



Immunohistochemistry

Image 2. Immunohistochemistry (IHC) analysis of paraffin-embedded Human Breast Cancer, antibody was diluted at 1:100.



Immunohistochemistry

Image 3. Immunohistochemistry (IHC) analysis of paraffin-embedded Human Breast Cancer, antibody was diluted at 1:100.