



[Go to Product page](#)

Datasheet for ABIN3188006

anti-XPO1 antibody (acLys568)

2 Images

Overview

| | |
|----------------------|-------------------------------------|
| Quantity: | 100 µL |
| Target: | XPO1 |
| Binding Specificity: | acLys568 |
| Reactivity: | Human, Mouse, Rat |
| Host: | Rabbit |
| Clonality: | Polyclonal |
| Conjugate: | This XPO1 antibody is un-conjugated |
| Application: | Western Blotting (WB), ELISA |

Product Details

| | |
|------------------|-----------------------------------------------------------------------------------------------------------------------|
| Immunogen: | Synthesized peptide derived from the Internal region of Acetyl-CRM1 (K568) |
| Isotype: | IgG |
| Specificity: | Acetyl-CRM1 (K568) Polyclonal Antibody detects endogenous levels of CRM1 protein only when acetylation at K568. |
| Characteristics: | Rabbit Polyclonal to Acetyl-CRM1 (K568). |
| Purification: | The antibody was affinity-purified from rabbit antiserum by affinity-chromatography using epitope-specific immunogen. |

Target Details

| | |
|---------|------|
| Target: | XPO1 |
|---------|------|

Target Details

Alternative Name: CRM1 ([XP01 Products](#))

Gene ID: 7514

UniProt: [O14980](#)

Pathways: [M Phase](#)

Application Details

Application Notes: WB 1:500-1:2000, ELISA 1:10000,

Restrictions: For Research Use only

Handling

Format: Liquid

Concentration: 1 mg/mL

Buffer: Liquid in PBS containing 50 % glycerol, 0.5 % BSA and 0.02 % sodium azide.

Preservative: Sodium azide

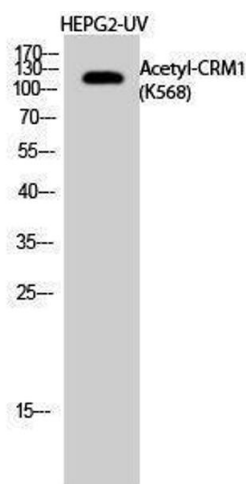
Precaution of Use: This product contains Sodium azide: a POISONOUS AND HAZARDOUS SUBSTANCE which should be handled by trained staff only.

Handling Advice: Avoid repeated freeze/thaw cycles.

Storage: -20 °C

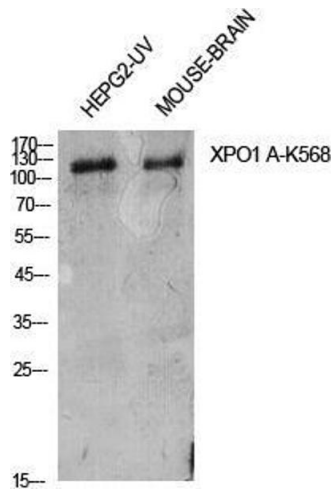
Storage Comment: Store at -20°C.

Images



Western Blotting

Image 1.



Western Blotting

Image 2. Western Blot (WB) analysis of HepG2-UV, Mouse Brain cells using Acetyl-CRM1 (K568) Polyclonal Antibody.