



[Go to Product page](#)

Datasheet for ABIN3188039

## anti-IGFN1 antibody

### 3 Images

#### Overview

Quantity:	100 µL
Target:	IGFN1
Reactivity:	Human, Mouse, Rat
Host:	Rabbit
Clonality:	Polyclonal
Conjugate:	This IGFN1 antibody is un-conjugated
Application:	Western Blotting (WB), Immunohistochemistry (IHC)

#### Product Details

Immunogen:	Recombinant Protein
Isotype:	IgG
Specificity:	The antibody detects endogenous IGFN1 protein.
Characteristics:	Rabbit Polyclonal to IGFN1.
Purification:	The antibody was affinity-purified from rabbit antiserum by affinity-chromatography using epitope-specific immunogen.

#### Target Details

Target:	IGFN1
Alternative Name:	IGFN1 ( <a href="#">IGFN1 Products</a> )
Gene ID:	91156

## Target Details

UniProt: [Q86VF2](#)

## Application Details

Application Notes: WB 1:2000-5000, IHC 1:200-500

Restrictions: For Research Use only

## Handling

Format: Liquid

Concentration: 1 mg/mL

Buffer: Liquid in PBS containing 50 % glycerol, 0.5 % BSA and 0.02 % sodium azide.

Preservative: Sodium azide

Precaution of Use: This product contains Sodium azide: a POISONOUS AND HAZARDOUS SUBSTANCE which should be handled by trained staff only.

Handling Advice: Avoid repeated freeze/thaw cycles.

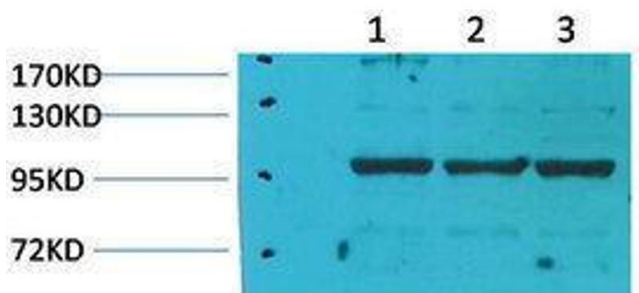
Storage: -20 °C

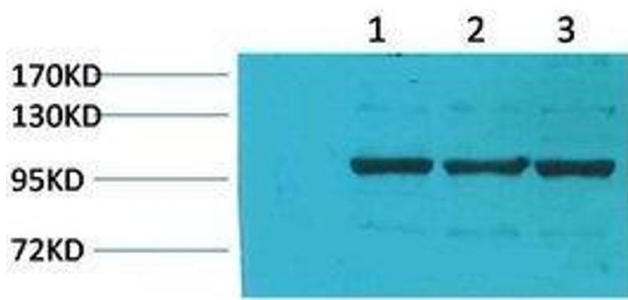
Storage Comment: Store at -20°C.

## Images

### Western Blotting

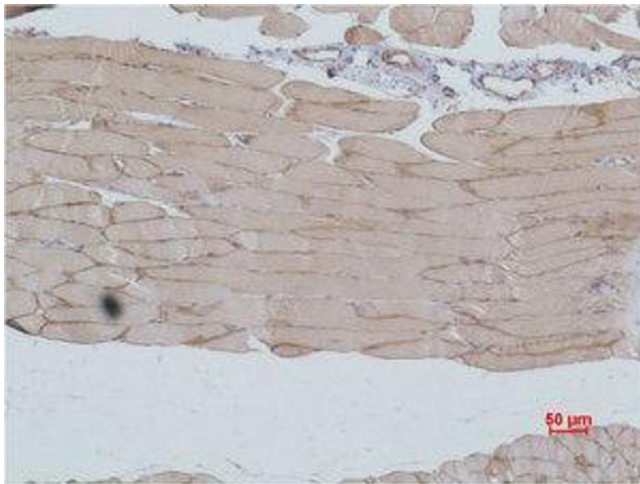
Image 1.





### Western Blotting

**Image 2.** Western Blot (WB) analysis of 1) Pig Skeletal Muscle Tissue, 2) Rat Skeletal Muscle Tissue, 3) Rat Skeletal Muscle Tissue using IGFN1 Polyclonal Antibody.



### Immunohistochemistry

**Image 3.** Immunohistochemistry (IHC) analysis of paraffin-embedded Mouse Skeletal Muscle Tissue using IGFN1 Polyclonal Antibody.