

Datasheet for ABIN3188066

**anti-KCNN2 antibody****3** Images[Go to Product page](#)

## Overview

|              |   |
|--------------|---|
| Quantity:    | 100 µL  |
| Target:      | KCNN2   |
| Reactivity:  | Human, Mouse, Rat                                 |
| Host:        | Rabbit  |
| Clonality:   | Polyclonal  |
| Conjugate:   | This KCNN2 antibody is un-conjugated              |
| Application: | Western Blotting (WB), Immunohistochemistry (IHC) |

## Product Details

|                  |   |
|------------------|---|
| Isotype:         | IgG   |
| Specificity:     | KCNN2 (SK2) Rabbit Polyclonal Antibody (A244) detects endogenous levels of KCNN2 (SK2)                        |
| Characteristics: | Rabbit Polyclonal to KCNN2 (SK2) (A244).  |
| Purification:    | The antibody was affinity-purified from rabbit antiserum by affinity-chromatography using specific immunogen. |

## Target Details

|                   |  |
|-------------------|--|
| Target:           | KCNN2                                    |
| Alternative Name: | KCNN2 ( <a href="#">KCNN2 Products</a> ) |
| Gene ID:          | 3781                                     |
| UniProt:          | <a href="#">Q6PJI0</a>                   |

## Application Details

Application Notes: WB 1:1000-2000, IHC 1:100-200

Restrictions: For Research Use only

## Handling

Format: Liquid

Concentration: 1 mg/mL

Buffer: Liquid in PBS containing 50 % glycerol, 0.5 % BSA and 0.02 % sodium azide.

Preservative: Sodium azide

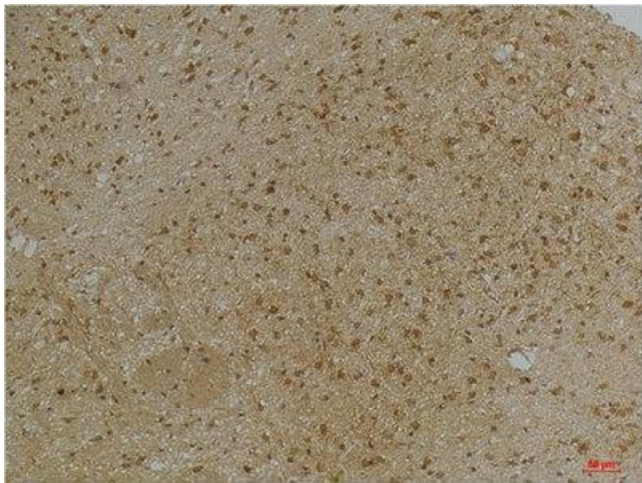
Precaution of Use: This product contains Sodium azide: a POISONOUS AND HAZARDOUS SUBSTANCE which should be handled by trained staff only.

Handling Advice: Avoid repeated freeze/thaw cycles.

Storage: -20 °C

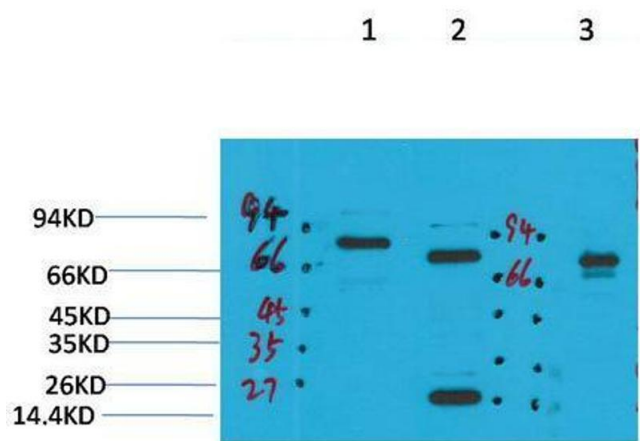
Storage Comment: Store at -20°C.

## Images



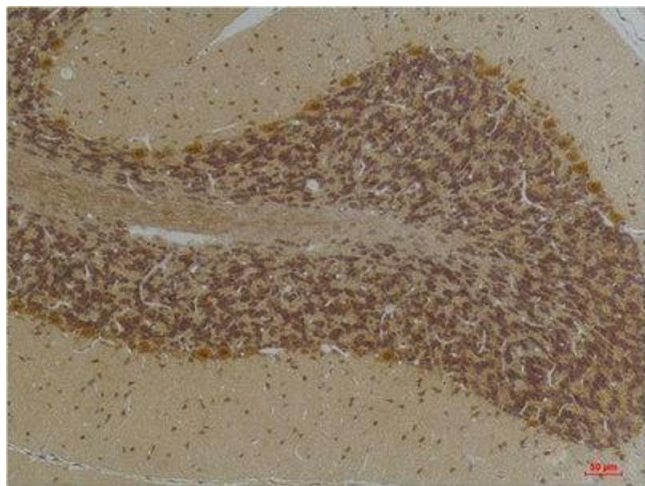
### Immunohistochemistry

**Image 1.** Immunohistochemistry (IHC) analysis of paraffin-embedded Mouse Brain Tissue using KCNN2(SK2) Rabbit Polyclonal Antibody diluted at 1:200.



### Western Blotting

**Image 2.** Western Blot (WB) analysis of 1) Rat Brain Tissue, 2) Mouse Brain Tissue, 3) HepG2 with KCNN2(SK2) Rabbit Polyclonal Antibody diluted at 1:2000.



### Immunohistochemistry

**Image 3.** Immunohistochemistry (IHC) analysis of paraffin-embedded Human Brain Tissue using KCNN2(SK2) Rabbit Polyclonal Antibody diluted at 1:200.