

Datasheet for ABIN3188068

anti-SLC12A4 antibody**3** Images[Go to Product page](#)

Overview

Quantity:	100 µL
Target:	SLC12A4
Reactivity:	Human, Rat, Mouse
Host:	Rabbit
Clonality:	Polyclonal
Conjugate:	This SLC12A4 antibody is un-conjugated
Application:	Western Blotting (WB), Immunohistochemistry (IHC)

Product Details

Isotype:	IgG
Specificity:	SLC12A4 Rabbit Polyclonal Antibody (A248) detects endogenous levels of SLC12A4
Characteristics:	Rabbit Polyclonal to SLC12A4 (A248).
Purification:	The antibody was affinity-purified from rabbit antiserum by affinity-chromatography using specific immunogen.

Target Details

Target:	SLC12A4
Alternative Name:	SLC12A4 (SLC12A4 Products)
Gene ID:	6560
UniProt:	Q9UP95

Application Details

Application Notes: WB 1:1000-2000, IHC 1:100-200

Restrictions: For Research Use only

Handling

Format: Liquid

Concentration: 1 mg/mL

Buffer: Liquid in PBS containing 50 % glycerol, 0.5 % BSA and 0.02 % sodium azide.

Preservative: Sodium azide

Precaution of Use: This product contains Sodium azide: a POISONOUS AND HAZARDOUS SUBSTANCE which should be handled by trained staff only.

Handling Advice: Avoid repeated freeze/thaw cycles.

Storage: -20 °C

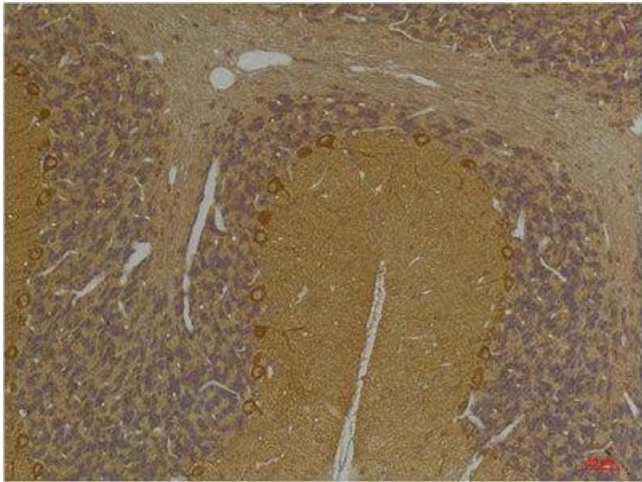
Storage Comment: Store at -20°C.

Images



Immunohistochemistry

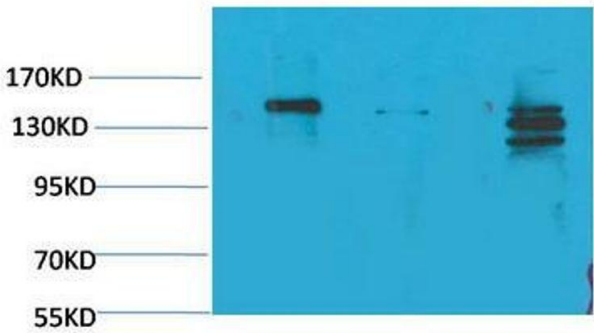
Image 1. Immunohistochemistry (IHC) analysis of paraffin-embedded Mouse Brain Tissue using SLC12A4 Rabbit Polyclonal Antibody diluted at 1:200.



Immunohistochemistry

Image 2. Immunohistochemistry (IHC) analysis of paraffin-embedded Rat Brain Tissue using SLC12A4 Rabbit Polyclonal Antibody diluted at 1:200.

1 2 3



Western Blotting

Image 3. Western Blot (WB) analysis of 1) Rat Brain Tissue, 2) Mouse Brain Tissue, 3) HeLa with SLC12A4 Rabbit Polyclonal Antibody diluted at 1:2000.