

Datasheet for ABIN3188070

**anti-KCNH5 antibody**

3 Images

[Go to Product page](#)

## Overview

Quantity:	100 µL
Target:	KCNH5
Reactivity:	Human, Rat, Mouse
Host:	Rabbit
Clonality:	Polyclonal
Conjugate:	This KCNH5 antibody is un-conjugated
Application:	Immunohistochemistry (IHC), Western Blotting (WB)

## Product Details

Isotype:	IgG
Specificity:	Kv10.2 Rabbit Polyclonal Antibody (A260) detects endogenous levels of Kv10.2
Characteristics:	Rabbit Polyclonal to Kv10.2 (A260).
Purification:	The antibody was affinity-purified from rabbit antiserum by affinity-chromatography using specific immunogen.

## Target Details

Target:	KCNH5
Alternative Name:	Kv10.2 ( <a href="#">KCNH5 Products</a> )
Gene ID:	238271
UniProt:	<a href="#">Q8NCM2</a>

## Application Details

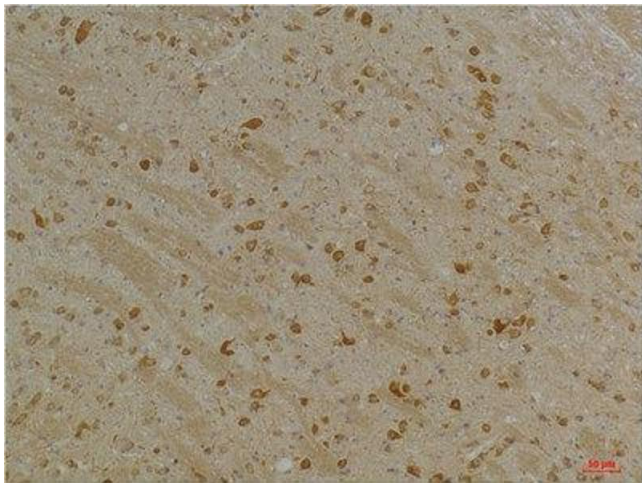
Application Notes: WB 1:1000-2000, IHC 1:100-200

Restrictions: For Research Use only

## Handling

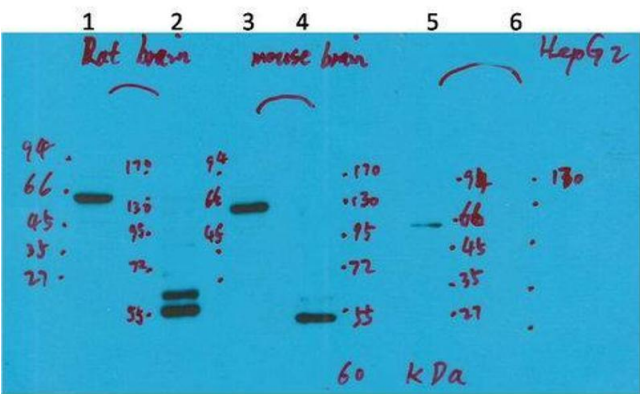
Format:	Liquid
Concentration:	1 mg/mL
Buffer:	Liquid in PBS containing 50 % glycerol, 0.5 % BSA and 0.02 % sodium azide.
Preservative:	Sodium azide
Precaution of Use:	This product contains Sodium azide: a POISONOUS AND HAZARDOUS SUBSTANCE which should be handled by trained staff only.
Handling Advice:	Avoid repeated freeze/thaw cycles.
Storage:	-20 °C
Storage Comment:	Store at -20°C.

## Images



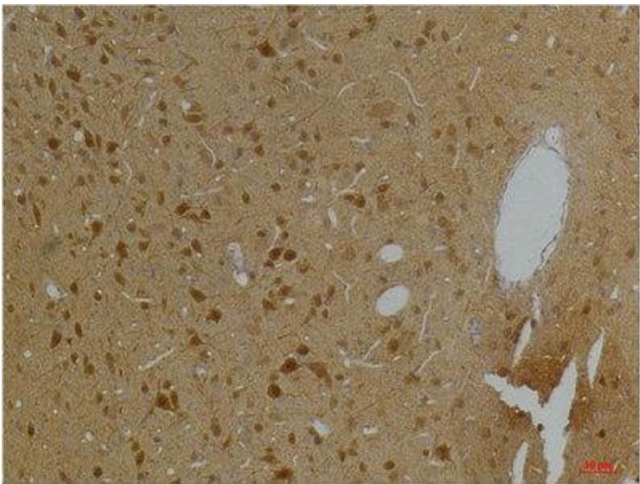
### Immunohistochemistry

**Image 1.** Immunohistochemistry (IHC) analysis of paraffin-embedded Mouse Brain Tissue using Kv10.2 Rabbit Polyclonal Antibody diluted at 1:200.



### Western Blotting

**Image 2.** Western Blot (WB) analysis of 1) Rat Brain Tissue- Low Molecular Protein Marker, 2) Rat Brain Tissue- High Molecular Protein Marker, 3) Mouse Brain Tissue- Low Molecular Protein Marker, 4) Mouse Brain Tissue- High Molecular Protein Marker, 5) HepG2- Low Molecular P.



### Immunohistochemistry

**Image 3.** Immunohistochemistry (IHC) analysis of paraffin-embedded Rat Brain Tissue using Kv10.2 Rabbit Polyclonal Antibody diluted at 1:200.