



[Go to Product page](#)

Datasheet for ABIN3188085

## anti-Caspase-8 p18 antibody (cleaved, Ser217)

### 2 Images

#### Overview

Quantity:	100 µL
Target:	Caspase-8 p18
Binding Specificity:	cleaved, Ser217
Reactivity:	Human
Host:	Rabbit
Clonality:	Polyclonal
Conjugate:	This Caspase-8 p18 antibody is un-conjugated
Application:	Western Blotting (WB), ELISA

#### Product Details

Isotype:	IgG
Specificity:	Cleaved-Caspase-8 p18 (S217) Polyclonal Antibody detects endogenous levels of Cleaved-Caspase-8 p18 (S217) protein.
Characteristics:	Rabbit Polyclonal to Cleaved-Caspase-8 p18 (S217).
Purification:	The antibody was affinity-purified from rabbit antiserum by affinity-chromatography using epitope-specific immunogen.

#### Target Details

Target:	Caspase-8 p18
Alternative Name:	Caspase-8 p18 ( <a href="#">Caspase-8 p18 Products</a> )

## Target Details

Gene ID: 841

UniProt: [Q14790](#)

## Application Details

Application Notes: WB 1:500-1:2000, ELISA 1:10000,

Restrictions: For Research Use only

## Handling

Format: Liquid

Concentration: 1 mg/mL

Buffer: Liquid in PBS containing 50 % glycerol, 0.5 % BSA and 0.02 % sodium azide.

Preservative: Sodium azide

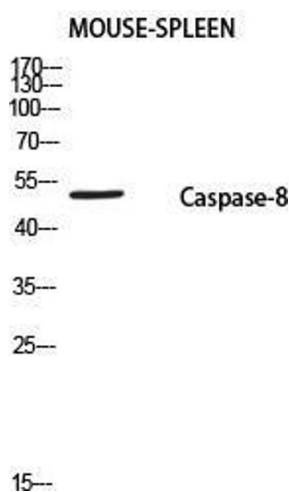
Precaution of Use: This product contains Sodium azide: a POISONOUS AND HAZARDOUS SUBSTANCE which should be handled by trained staff only.

Handling Advice: Avoid repeated freeze/thaw cycles.

Storage: -20 °C

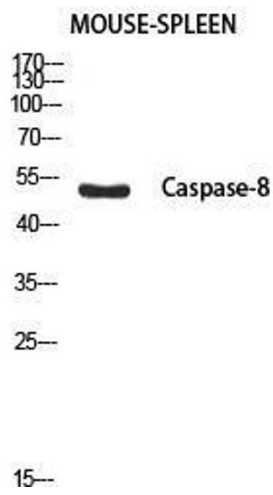
Storage Comment: Store at -20°C.

## Images



### Western Blotting

**Image 1.** Western Blot (WB) analysis of Mouse Spleen using Caspase-8 P18 antibody.



### Western Blotting

**Image 2.** Western Blot (WB) analysis of Mouse Spleen using Cleaved-Caspase-8 p18 (S217) antibody.