

Datasheet for ABIN319033
anti-ADAM10 antibody (AA 732-748)[Go to Product page](#)

3 Images

Overview

Quantity:	0.1 mg
Target:	ADAM10
Binding Specificity:	AA 732-748
Reactivity:	Human
Host:	Rabbit
Clonality:	Polyclonal
Conjugate:	This ADAM10 antibody is un-conjugated
Application:	Western Blotting (WB), Immunofluorescence (IF)

Product Details

Immunogen:	Peptide corresponding to amino acids 732-748 of human CDw156C.
Isotype:	IgG
Specificity:	This antibody recognises the C-terminal region of the mettaloprotease-disintegrin ADAM-10, also known as CDw156C.
Purification:	Purified

Target Details

Target:	ADAM10
Alternative Name:	CD156c / ADAM10 (ADAM10 Products)
Background:	ADAM-10 is a member of the mammalian ADAM family and is involved in the cleavage of TNF

Target Details

alpha, Notch and its ligand delta. ADAM-10 mRNA is expressed in a variety of human tissues. Synonyms: Disintegrin and metalloproteinase domain-containing protein 10, KUZ, Kuzbanian protein homolog, MADM, Mammalian disintegrin-metalloprotease

Gene ID: 102

NCBI Accession: [NP_001101](#)

UniProt: [O14672](#)

Pathways: [Notch Signaling](#), [EGFR Signaling Pathway](#)

Application Details

Application Notes: Western Blot: 1: 1000.
Other applications not tested.
Optimal dilutions are dependent on conditions and should be determined by the user.

Restrictions: For Research Use only

Handling

Concentration: 0.5 mg/mL

Buffer: Phosphate buffered saline containing 0.02 % Sodium Azide

Preservative: Sodium azide

Precaution of Use: This product contains sodium azide: a POISONOUS AND HAZARDOUS SUBSTANCE which should be handled by trained staff only.

Handling Advice: Avoid repeated freezing and thawing.

Storage: 4 °C/-20 °C

Storage Comment: Store the antibody undiluted at 2-8 °C for one month or (in aliquots) at -20 °C for longer.

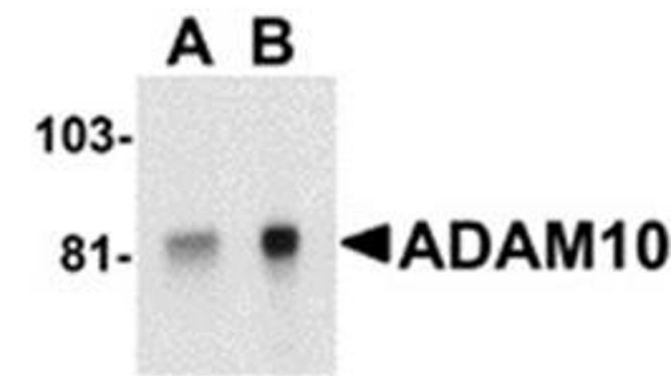


Image 1.

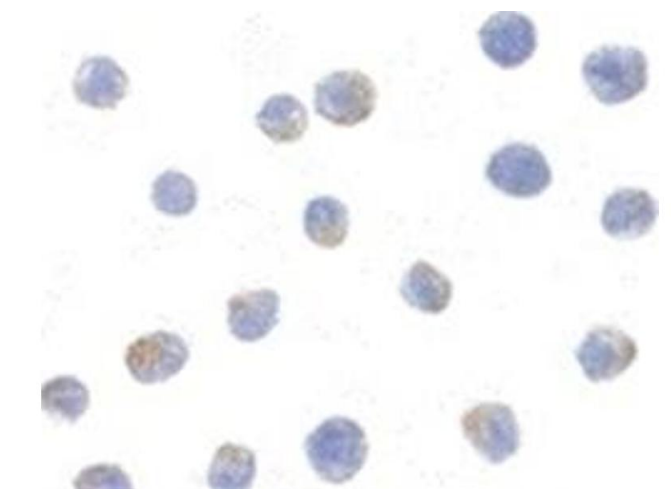


Image 2.

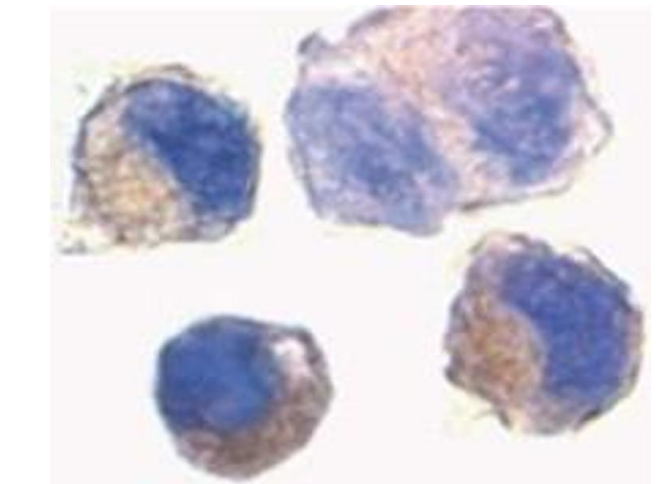


Image 3.