

Datasheet for ABIN319223  
**anti-MYL2 antibody (pSer18)**



[Go to Product page](#)

2 Images

## Overview

Quantity:	0.1 mL
Target:	MYL2
Binding Specificity:	pSer18
Reactivity:	Human, Mouse, Rat
Host:	Rabbit
Clonality:	Polyclonal
Conjugate:	This MYL2 antibody is un-conjugated
Application:	Western Blotting (WB), Immunohistochemistry (Paraffin-embedded Sections) (IHC (p))

## Product Details

Immunogen:	The antiserum was produced against synthesized phosphopeptide derived from Human Myosin Light Chain 2 around the phosphorylation site of serine 18 (A-T-Sp-N-V).
Specificity:	This antibody detects endogenous levels of Myosin Light Chain 2 only when phosphorylated at Serine 18.
Cross-Reactivity (Details):	Species reactivity (tested): Human, Mouse and Rat.
Purification:	Immunoaffinity Chromatography using epitope-specific phosphopeptide. The antibody against non-phosphopeptide was removed by chromatography using non-phosphopeptide corresponding to the phosphorylation site.

## Target Details

Target:	MYL2
---------	------

## Target Details

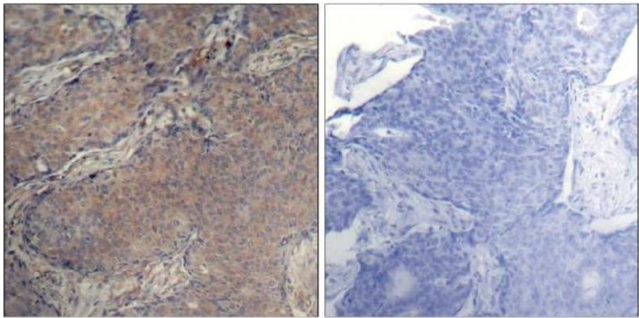
Alternative Name:	Myosin Light Chain 2 (MYL2) ( <a href="#">MYL2 Products</a> )
Background:	Myosin light chain 2 (MYL2) encodes the regulatory light chain associated with cardiac myosin beta heavy chain. It is an important protein involved in the regulation of myosin ATPase activity in smooth muscle and Ca <sup>+</sup> triggers the phosphorylation of regulatory light chain that in turn triggers contraction. Mutations in MYL2 are associated with mid-left ventricular chamber type hypertrophic cardiomyopathy.Synonyms: MLC-2, MLC-2v, Myosin regulatory light chain 2 ventricular/cardiac muscle isoform
Molecular Weight:	18 kDa
Gene ID:	4633
NCBI Accession:	<a href="#">NP_000423</a>
UniProt:	<a href="#">P10916</a>
Pathways:	<a href="#">Myometrial Relaxation and Contraction</a>

## Application Details

Application Notes:	Western Blot: 1/500approx. 1/1000. Immunohistochemistry: 1/50approx. 1/100. Other applications not tested. Optimal dilutions are dependent on conditions and should be determined by the user.
Restrictions:	For Research Use only

## Handling

Concentration:	1.0 mg/mL
Buffer:	PBS (without Mg <sup>2+</sup> and Ca <sup>2+</sup> ), pH 7.4, 150 mM NaCl, 0.02 % Sodium Azide, 50 % Glycerol
Preservative:	Sodium azide
Precaution of Use:	This product contains sodium azide: a POISONOUS AND HAZARDOUS SUBSTANCE which should be handled by trained staff only.
Handling Advice:	Avoid repeated freezing and thawing.
Storage:	-20 °C
Storage Comment:	Store the antibody (in aliquots) at -20 °C.



P-Peptide - +

Image 1.

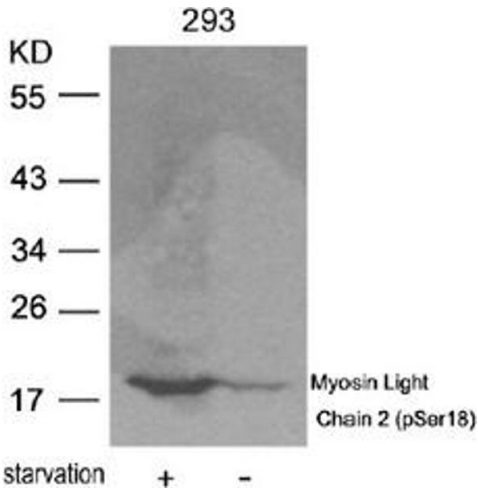


Image 2.