

Datasheet for ABIN319365
anti-MEG3 antibody (Ser712)[Go to Product page](#)

2 Images

Overview

Quantity:	0.1 mL
Target:	MEG3 (FAM129B)
Binding Specificity:	Ser712
Reactivity:	Human, Mouse
Host:	Rabbit
Clonality:	Polyclonal
Conjugate:	This MEG3 antibody is un-conjugated
Application:	Western Blotting (WB), Immunofluorescence (IF)

Product Details

Immunogen:	The antiserum was produced against synthesized non-phosphopeptide derived from human Niban Like Protein 1 around the phosphorylation site of Serine 712 (Q-V-S-Sp-P).
Specificity:	This antibody detects endogenous levels of total Niban Like Protein 1.
Purification:	Immunoaffinity Chromatography using epitope-specific immunogen.

Target Details

Target:	MEG3 (FAM129B)
Alternative Name:	Niban-Like Protein 1 (FAM129B Products)
Background:	Niban-like protein (NIBL) is a member of the niban family of proteins and contains a pleckstrin homology (PH) domain which is found in proteins involved in intracellular signaling and cytoskeletal organization.Synonyms: FAM129B, Meg-3

Target Details

Gene ID:	64855
NCBI Accession:	NP_001030611
UniProt:	Q96TA1

Application Details

Application Notes:	Western Blot: 1/500approx. 1/1000. Immunofluorescence: 1/100approx. 1/200. Other applications not tested. Optimal dilutions are dependent on conditions and should be determined by the user.
Restrictions:	For Research Use only

Handling

Concentration:	1.0 mg/mL
Buffer:	PBS (without Mg ²⁺ and Ca ²⁺), pH 7.4, 150 mM NaCl, 0.02 % Sodium Azide and 50 % Glycerol.
Preservative:	Sodium azide
Precaution of Use:	This product contains sodium azide: a POISONOUS AND HAZARDOUS SUBSTANCE which should be handled by trained staff only.
Handling Advice:	Avoid repeated freezing and thawing.
Storage:	-20 °C
Storage Comment:	Store the antibody (in aliquots) at -20 °C.

Images

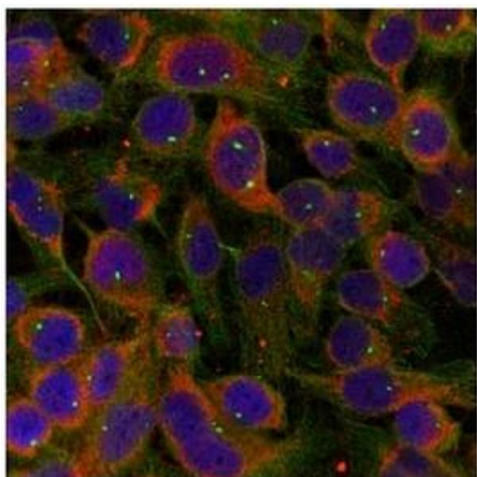


Image 1.

Image 2.

