

Datasheet for ABIN319381  
**anti-Cofilin antibody (Tyr88)**



[Go to Product page](#)

3 Images

## Overview

Quantity:	0.1 mL
Target:	Cofilin (CFL1)
Binding Specificity:	Tyr88
Reactivity:	Human, Mouse
Host:	Rabbit
Clonality:	Polyclonal
Conjugate:	This Cofilin antibody is un-conjugated
Application:	Western Blotting (WB), Immunofluorescence (IF), Immunohistochemistry (Paraffin-embedded Sections) (IHC (p))

## Product Details

Immunogen:	The antiserum was produced against synthesized non-phosphopeptide derived from human Cofilin1/Cofilin2 around the phosphorylation site of Tyrosine 88 (A-T-Yp-E-T).
Specificity:	This antibody detects endogenous levels of total Cofilin-1/2 protein.
Cross-Reactivity (Details):	Also reacts to: Cofilin 2
Purification:	Immunoaffinity Chromatography.

## Target Details

Target:	Cofilin (CFL1)
Alternative Name:	Cofilin-1 ( <a href="#">CFL1 Products</a> )

## Target Details

Background:	Cofilin is ubiquitously expressed in eukaryotic cells where it binds to Actin, thereby regulating the rapid cycling of Actin assembly and disassembly essential for cellular viability. Cofilin is a low molecular weight protein that binds to filamentous F-Actin by bridging two longitudinally associated Actin subunits changing the F-Actin filament twist. This process is allowed by the dephosphorylation of Cofilin Ser 3 by factors such as opsonized zymosan. Lim kinase 1, a serine kinase, phosphorylates Cofilin and renders it unable to bind and depolymerise F-Actin.Synonyms: 18 kDa phosphoprotein, CFL, CFL1, Cofilin non-muscle isoform, p18
Gene ID:	1072
NCBI Accession:	<a href="#">NP_005498</a>
UniProt:	<a href="#">P23528</a>
Pathways:	<a href="#">Regulation of Cell Size</a> , <a href="#">Tube Formation</a> , <a href="#">Protein targeting to Nucleus</a> , <a href="#">CXCR4-mediated Signaling Events</a>

## Application Details

Application Notes:	Western Blot: 1/500approx. 1/1000. Immunofluorescence: 1/100approx. 1/200. Immunohistochemistry on Paraffin-Embedded Sections: 1/50approx. 1/100. Other applications not tested. Optimal dilutions are dependent on conditions and should be determined by the user.
Restrictions:	For Research Use only

## Handling

Concentration:	1.0 mg/mL
Buffer:	PBS (without Mg <sup>2+</sup> and Ca <sup>2+</sup> ), pH 7.4, 150 mM NaCl, 0.02 % Sodium Azide and 50 % Glycerol.
Preservative:	Sodium azide
Precaution of Use:	This product contains sodium azide: a POISONOUS AND HAZARDOUS SUBSTANCE which should be handled by trained staff only.
Handling Advice:	Avoid repeated freezing and thawing.
Storage:	-20 °C
Storage Comment:	Store the antibody (in aliquots) at -20 °C.

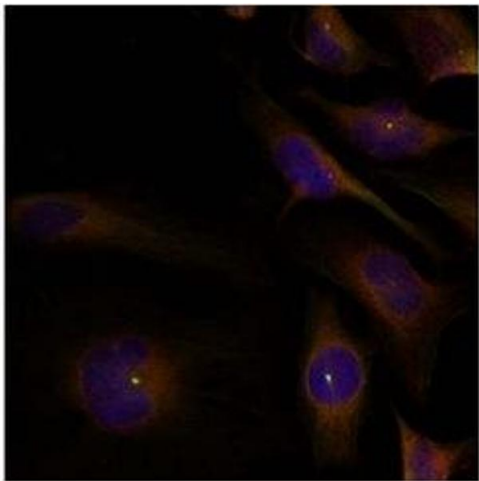


Image 1.

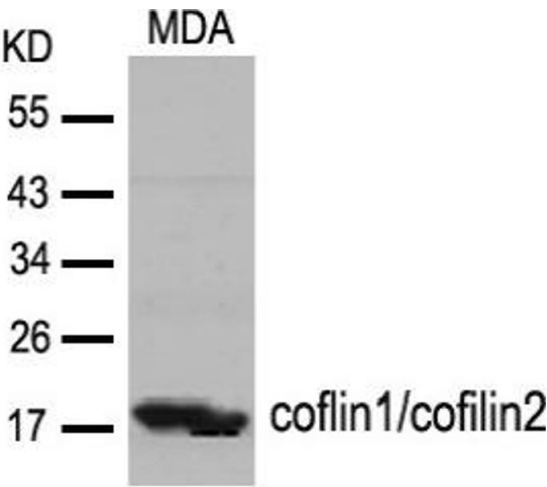


Image 2.

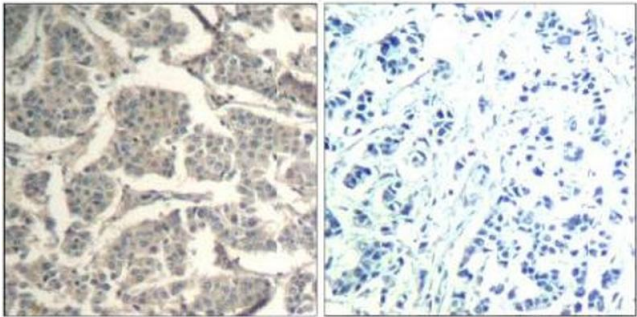


Image 3.