

Datasheet for ABIN3201016

anti-EID1 antibody (AA 159-187)[2 Images](#)[2 Publications](#)[Go to Product page](#)

Overview

Quantity:	100 µg
Target:	EID1
Binding Specificity:	AA 159-187
Reactivity:	Human
Host:	Mouse
Clonality:	Monoclonal
Conjugate:	This EID1 antibody is un-conjugated
Application:	ELISA, Western Blotting (WB), Immunofluorescence (IF)

Product Details

Immunogen:	Synthetic peptide containing aa 159-187 of human DIE1 protein
Clone:	26
Isotype:	IgG2a kappa
Specificity:	Reacts with human, mouse and rat EID1 proteins
Purification:	This antibody was purified by our propriety chromatography under mild conditions as IgG fraction from serum-free growth medium of hybridoma clone #26.
Sterility:	Sterile filtered

Target Details

Target:	EID1
---------	------

Target Details

Alternative Name:	EID1 (EID1 Products)
Background:	EID1 (EP300 interacting inhibitor of differentiation 1) encodes a 21 kDa protein, which interacts with RB1 and EP300 and acts as a repressor of MYOD1 transcription. EID1 inhibits EP300 and CBP histone acetyltransferase activity. It may be involved in coupling cell cycle exit to the transcription of genes required for cellular differentiation.
UniProt:	Q9Y6B2

Application Details

Application Notes:	1) Western blotting: ~1 g/mL 2) Immunofluorescence staining: 1~5 g/mL 3) ELISA Other applications have not been tested.
Restrictions:	For Research Use only

Handling

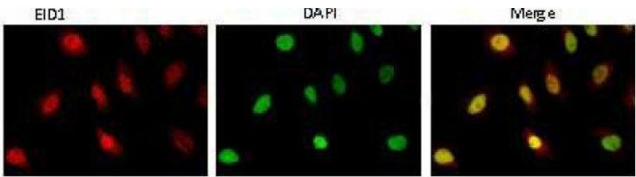
Format:	Liquid
Concentration:	1 mg/mL
Buffer:	PBS (pH 7.4), 50 % glycerol. Azide- and carrier-free
Preservative:	Azide free
Storage:	-20 °C
Storage Comment:	Upon arrival centrifuge briefly and store at -20 C.

Publications

Product cited in:	Wu, Yu, Wu, Zheng, Ni, Li, Du, Jiang: "Expressions and clinical significances of c-MET, p-MET and E2f-1 in human gastric carcinoma." in: BMC research notes , Vol. 7, pp. 6, (2014) (PubMed).
-------------------	--

Immunofluorescence

Image 1.



Western Blotting

Image 2.

